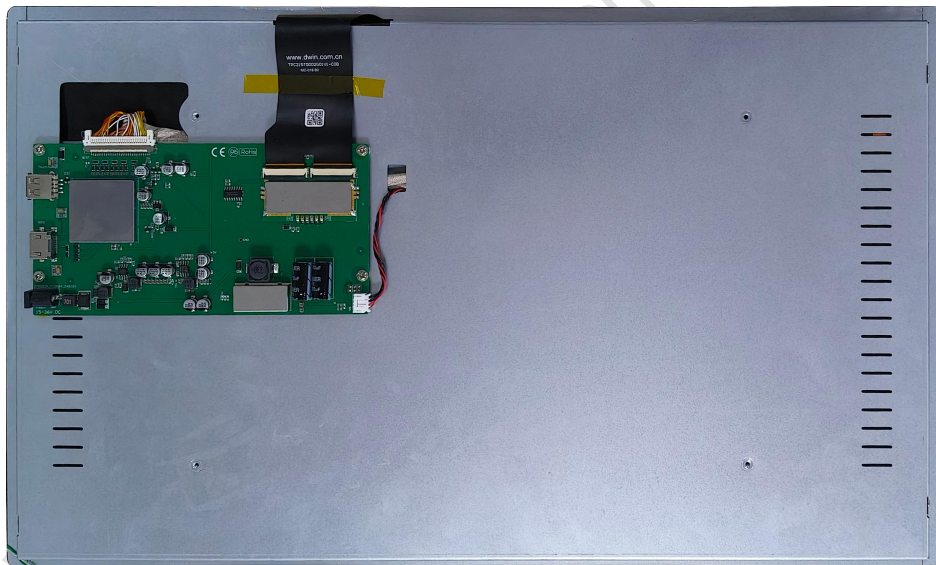
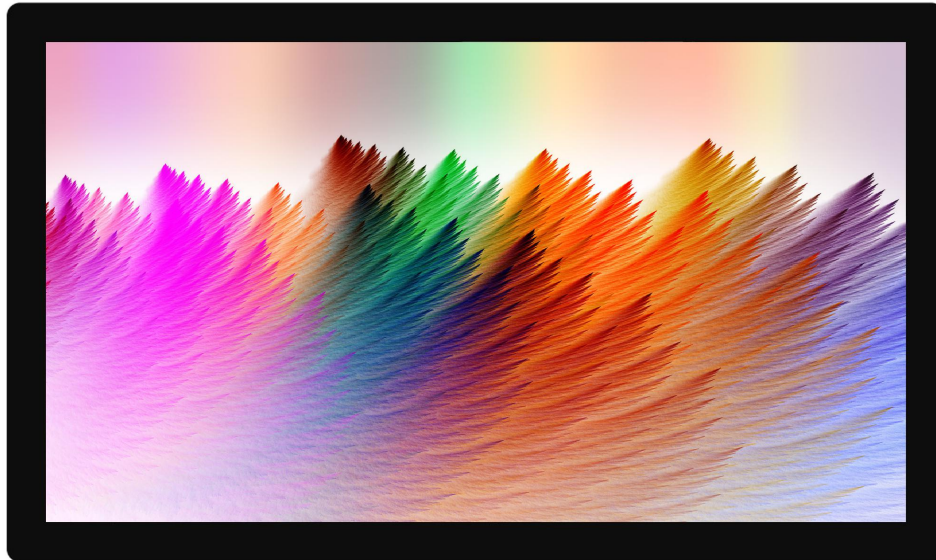


HDW215_001L

21.5 Inch, 1920xRGBx1080, 16.7M Colors,

IPS screen, Capacitive Touch



Note: The physical picture is a left and right flip picture.

● Display

Item	Parameter	Description
Color	16.7M (16777216) colors	24 bit color 8R8G8B
Panel Type	IPS	IPS TFT LCM ,wide viewing angle
Viewing Angle	85/85/85/85 (L/R/U/D)	Best View: symmetrical
Active Area (A.A.)	476.06 mm(W)*267.88 mm(H)	1920*1080
View Area (V.A.)	477.24 mm(W)*268.71mm(H)	1920*1080
Resolution	1920*1080	Support 0°/90°/180°/270°rotated display
Backlight	LED	≥20000H (Continuous working with maximum brightness, time of brightness halves)
Brightness	200nit	-

Note:You can use dynamic screen saver wallpapers to avoid afterimages caused by fixed page display for a long time.

● Voltage & Current

Item	Description	
Power Voltage	15-36V, typical value 24V	
Operation Current	1450mA	VCC=15V (Minimum starting voltage)
	900mA	VCC=24V (Standard supply voltage)
	630mA	VCC=36V (highest voltage)

Recommended power supply: 24V 1.5A DC

● Reliability Test

Item	Conditions	Min	Typ	Max	Unit
Working Temperature	60%RH at 24V voltage	0	25	50	℃
Storage Temperature	-	-20	25	60	℃
Working Humidity	25℃	10%	60%	90%	RH
ESD	Contact discharge: ±6KV; Air discharge: ±8KV (GB/T 17626.2 B level and above)				
RE	CLASS B				

● Interface

Item	Description
Socket	Power interface, HDMI interface
USB Interface	Yes

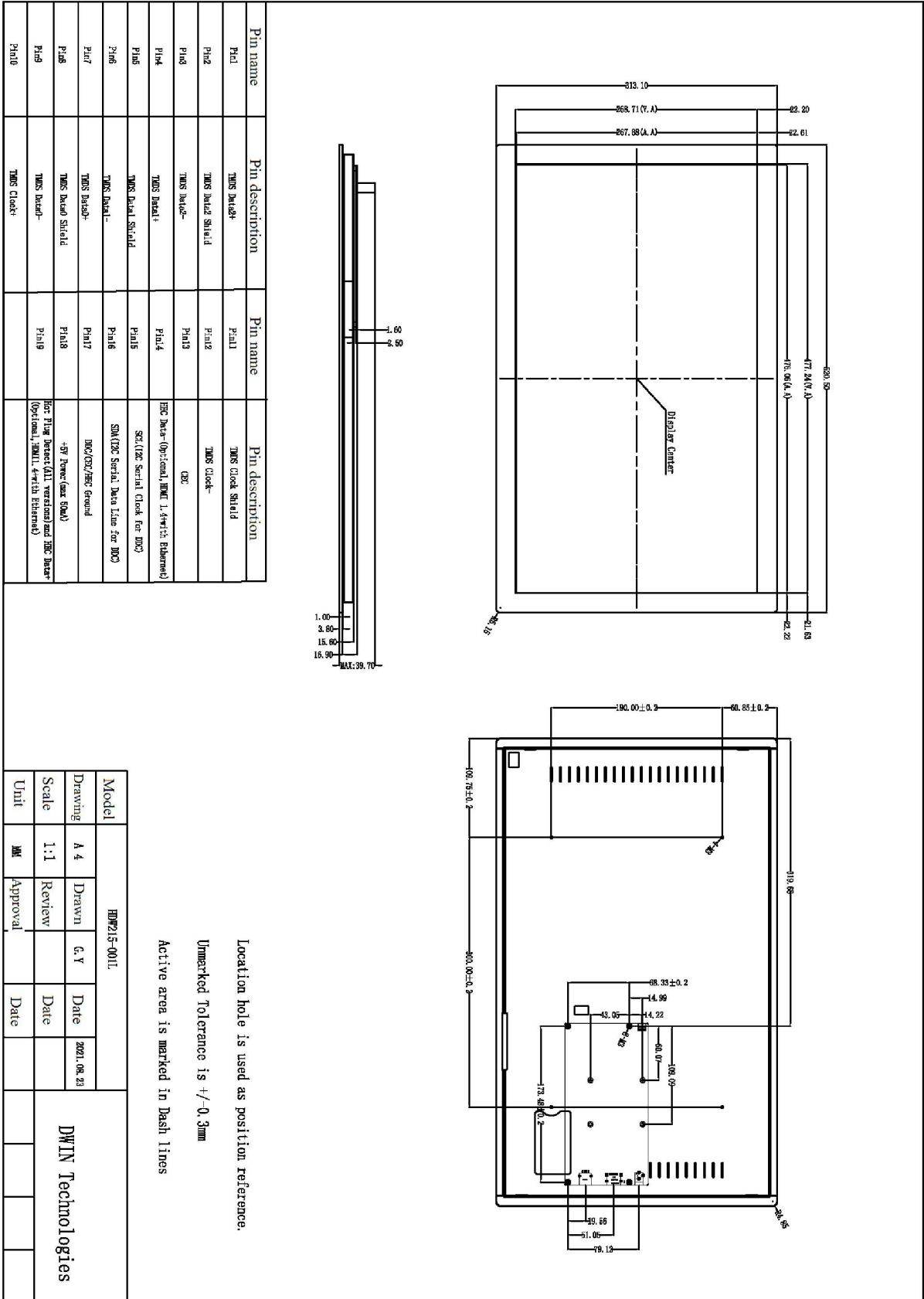
● Peripheral

Peripheral	Capacitive touch panel
------------	------------------------

● Packing Capacity & Dimension

Dimension				
Dimension	520.5(W)*313.1(H)*39.7(T)mm			
Net Weight	4200g			
Packing Capacity				
Model	Size	Layer	Quantity/Layer	Quantity(Pcs)
Carton1:	610mm(L)*390mm(W)*100mm(H)	1	1	1

Disclaimer: The product design is subject to alternation and improvement without prior notice.



Record of Revision

Ver	Revise Date	Content	Editor
00	2022-12-14	First Edition	Kaya
01	2024-02-21	EMC hardware upgrade, natural consumption of inventory	YML

Please contact us if you have any questions about the use of this document or our products, or if you would like to know the latest information about our products:

Customer service Tel: +86-400-018-9008

Customer service E-mail: dwinhmi@dwin.com.cn

Website: www.dwin-global.com

DWIN Developer Forum: <https://forums.dwin-global.com/index.php/forums>

Thank you all for continuous support of DWIN, and your approval is the driving force of our progress!

DWIN Technologies Technical Document