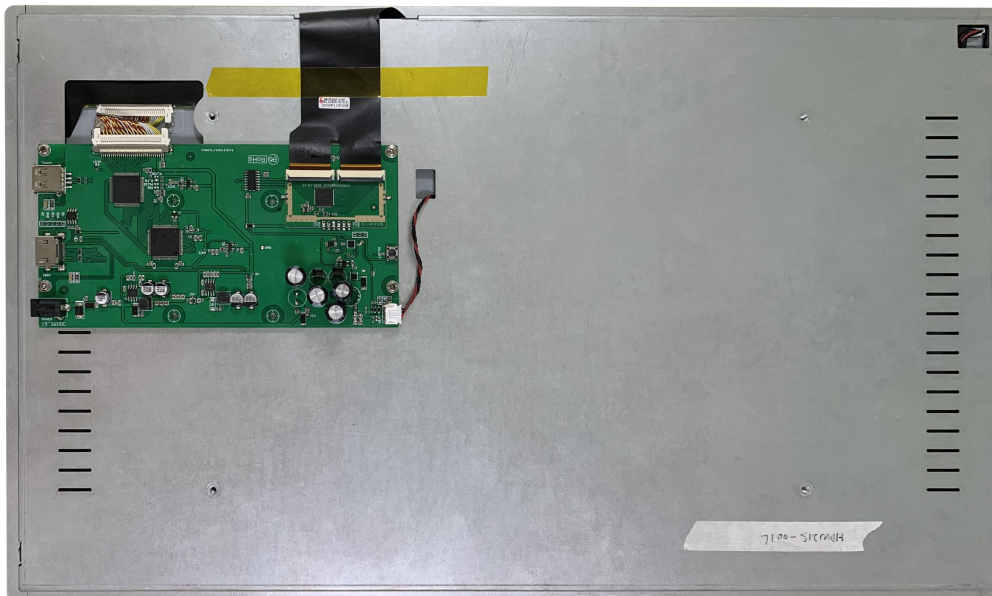


HDW215_001L

21.5 Inch, 1920xRGBx1080, 16.7M Colors, IPS screen, CTP



Record of Revision

Ver	Revise Date	Content	Editor
00	2022-12-14	First Edition	Kaya

● Display

Item	Parameter	Description
Color	16.7M(16777216)colors	24 bit color 8R8G8B
Panel Type	IPS	IPS TFT LCM ,wide viewing angle
Viewing Angle	85/85/85/85 (L/R/U/D)	Best View: symmetrical
Active Area (A.A.)	476.06 mm(W)× 267.88 mm(H)	1920x1080
View Area (V.A.)	477.24 mm(W)× 268.71mm(H)	1920x1080
Resolution	1920x1080	Support 0°/90°/180°/270°rotated display
Backlight	LED	≥20000H (Continuous working with maximum brightness, time of brightness halves)
Brightness	200nit	-

Note:You can use dynamic screen saver wallpapers to avoid afterimages caused by fixed page display for a long time.

● Voltage & Current

Item	Conditions	Min	Typ	Max	Unit
Power Voltage	-	15	24	36	V
Operation Current	VCC = +24V	-	500	-	mA

Recommended power supply: 24V 1A DC

● Reliability Test

Item	Conditions	Min	Typ	Max	Unit
Working Temperature	60%RH at 24V voltage	0	25	50	°C
Storage Temperature	-	-20	25	60	°C
Working Humidity	25°C	10%	60%	90%	RH

● Interface

Item	Description
Socket	Power interface, HDMI interface
USB Interface	Yes
SD Card Slot	None

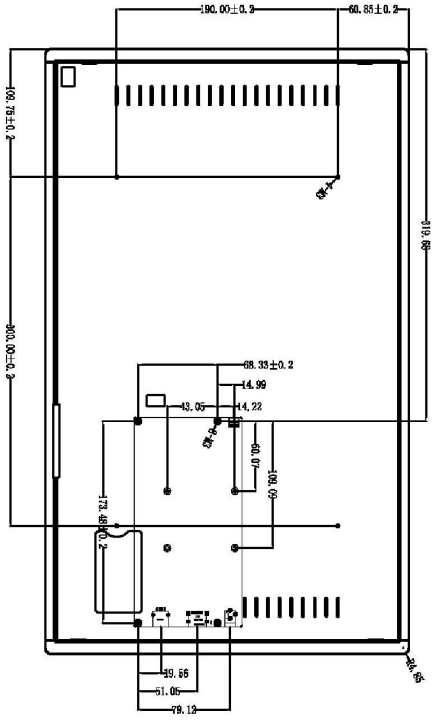
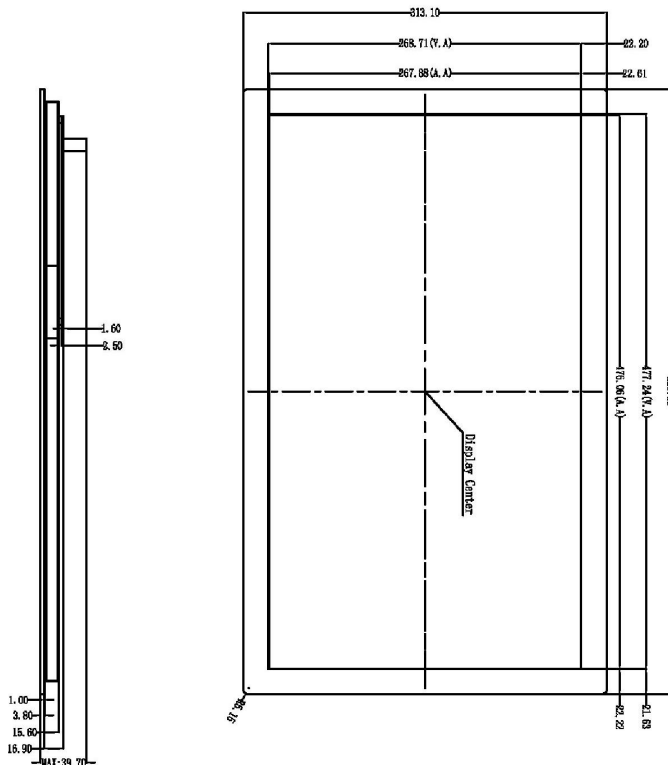
● Peripheral

Peripheral	Capacitive touch panel
------------	------------------------

● Packing Capacity & Dimension

Dimension				
Dimension	520.5(W)×313.1(H)×39.7(T)mm			
Net Weight	4200g			
Packing Capacity				
Model	Size	Layer	Quantity/Layer	Quantity(Pcs)
Carton1:	610mm(L)×390mm(W)×100mm(H)	1	1	1

Disclaimer: The product design is subject to alternation and improvement without prior notice.



Pin name	Pin description	Pin name	Pin description
Pin1	TMS Dnsd+	Pin1	TMS Clock Shield
Pin2	TMS Dnsd2 Shield	Pin2	TMS Clock-
Pin3	TMS Dnsd2-	Pin3	DB+
Pin4	TMS Dnsd1+	Pin4	DB- (Optional, RMT 1.4 with Ethernet)
Pin5	TMS Dnsd1 Shield	Pin5	SD(CDC) Serial Clock for MD5
Pin6	TMS Dnsd1-	Pin6	SD(CDC) Serial Data Line for MD5
Pin7	TMS Dnsd0-	Pin7	DD/CDC/DB+ Ground
Pin8	TMS Dnsd0 Shield	Pin8	+5V Power (see 50A)
Pin9	TMS Dnsd0-	Pin9	Hot Plug Detect (All versions and HEC base (Optional, HMTL 4 with Ethernet))
Pin10	TMS Clock+		

Location hole is used as position reference.
 Unmarked Tolerance is +/-0.3mm
 Active area is marked in Dash lines

Model	HDW215-001L			DWIN Technologies
Drawing	A 4	Drawing	G.Y	
Scale	1:1	Review	Date	
Unit	MM	Approval	Date	