

HDW156_001L

**15.6 Inch, 1920xRGBx1080, 16.7M Colors,
IPS screen, Capacitive touch**



● Display

Item	Parameter	Description
Color	16.7M (16777216) colors	24 bit color 8R8G8B
Panel Type	IPS	High contrast,good color reproduction,wide viewing angle(typical value is 85/85/85/85)
Viewing Angle	85/85/85/85(L/R/U/D)	-
Active Area (A.A.)	343.16mm(W) *192.6mm(H)	1920*1080
View Area (V.A.)	342.16mm(W) *191.59mm(H)	1920*1080
Resolution	1920*1080	Support 0°/90°/180°/270°rotated display
Backlight	LED	≥20000H (Continuous working with maximum brightness, time of the brightness decays to 50%)
Brightness	250nit	100 levels adjustment.(It's not recommended to set brightness to 1%~30% of the maximum,which may lead LCD flicker)

Note: You can use dynamic screen saver wallpapers to avoid afterimages caused by fixed page display for a long time.

● Voltage & Current

Item	Conditions	Min	Typ	Max	Unit
Power Voltage	-	12	12	36	V
Current parameters	-	-	420	-	mA

Recommended power supply: 12V 1A DC

● Reliability Test

Item	Conditions	Min	Typ	Max	Unit
Working Temperature	60%RH at 12V voltage	0	25	50	℃
Storage Temperature	-	-20	25	60	℃
Working Humidity	25℃	10%	60%	90%	RH

● EFT Immunity Requirements

Environmental Phenomenon	Port	Test Specification	Basic standard	Performance criterion
Electrical fast transients	Input a.c. power port	±2KV(peak) Tr/Th:5/50ns Repetition frequency:5kHz or 100kHz	IEC 61000-4-4	B

● ESD Immunity Requirements

Environmental Phenomenon	Port	Test Specification	Basic standard	Performance criterion
Electrostatic discharge	Enclosure port	+4kV(Contact Discharge)	IEC 61000-4-2	B
		+8kV(Air Discharge)	IEC 61000-4-2	B

● Interface

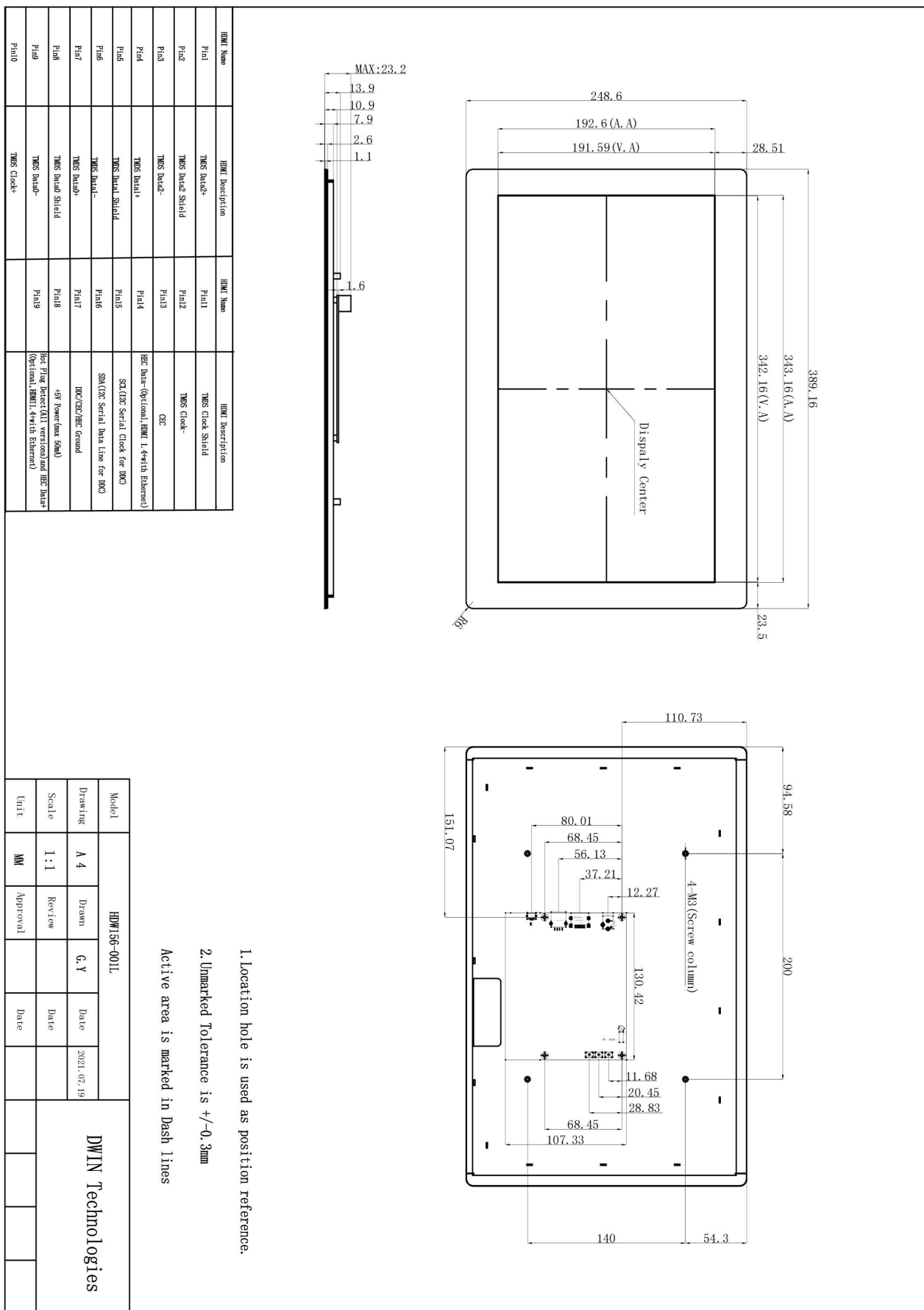
Item	Description
Socket	12-36V Power interface, HDMI interface
USB Interface	Yes
SD Card Slot	None

● Peripheral

Peripheral	Capacitive touch panel
------------	------------------------

● Packing Capacity & Dimension

Dimension				
Dimension	389.16(W)×248.6(H)×23.2(T)mm			
Net Weight	1660g			
Packing Capacity				
Model	Size	Layer	Quantity/Layer	Quantity(Pcs)
Carton1:	525mm(L)×330mm(W)×80mm(H)	1	1	1
Carton2:	570mm(L)×340mm(W)×385mm(H)	1	5	5



Revision records

Rev	Revise Date	Content	Editor
00	2022-12-21	First Edition	Kaya
01	2024-03-28	Add ESD/EFT parameters	YML
02	2025-05-09	Modify the physical product image	Chen

Please contact us if you have any questions about the use of this document or our products, or if you would like to know the latest information about our products:

Customer service Tel: +86-400-018-9008

Customer service E-mail: dwinhmi@dwin.com.cn

Website: www.dwin-global.com

DWIN Developer Forum: <https://forums.dwin-global.com/index.php/forums>

Thank you all for continuous support of DWIN, and your approval is the driving force of our progress!

Important Disclaimer

DWIN reserves the right to make any changes to product designs without prior notice.

Customers should ensure strictly adhering to all the relevant standards and requirements during the product application process, including but not limited to functional safety, information security, and regulatory provisions.

DWIN shall not bear any joint and several liability for any consequences that may arise from customers' adoption of DWIN products. In particular, for risks that may lead to significant property losses, environmental hazards, personal injury, or even death, especially in high-risk application areas such as military applications, flammable and explosive places, and life-saving medical equipment, customers should independently assess the risks and take corresponding preventive and protective measures. DWIN shall not bear any relevant responsibility.