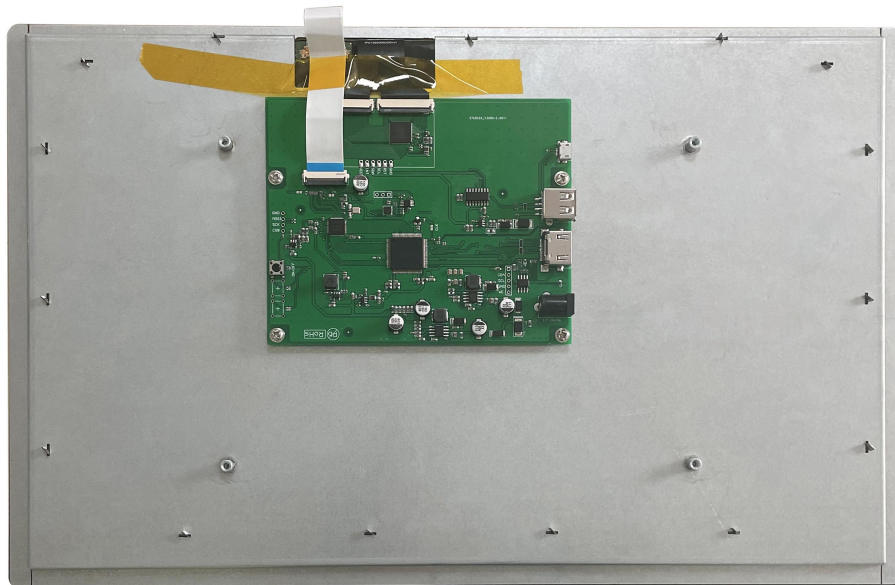


# HDW156\_001L

15.6 Inch, 1920xRGBx1080, 16.7M Colors, IPS screen, CTP



## Record of Revision

| Ver | Revise Date | Content       | Editor |
|-----|-------------|---------------|--------|
| 00  | 2022-12-21  | First Edition | Kaya   |

## ● Display

| Item               | Parameter                | Description  |
|--------------------|--------------------------|--|
| Color              | 16.7M(16777216)colors    | 24 bit color 8R8G8B  |
| Panel Type         | IPS                      | High contrast,good color reproduction,wide viewing angle(typical value is 85/85/85/85)                           |
| Viewing Angle      | 85/85/85/85(L/R/U/D)     | -  |
| Active Area (A.A.) | 343.16mm(W) ×192.6mm(H)  | 1920x1080  |
| View Area (V.A.)   | 342.16mm(W) ×191.59mm(H) | 1920x1080  |
| Resolution         | 1920x1080                | Support 0°/90°/180°/270°rotated display  |
| Backlight          | LED                      | ≥20000H<br>(Continuous working with maximum brightness, time of the brightness decays to 50%)                    |
| Brightness         | 250nit                   | 100 levels adjustment.(It's not recommend to set brightness to 1%~30% of the maximum,which may lead LCD flicker) |

Note: You can use dynamic screen saver wallpapers to avoid afterimages caused by fixed page display for a long time.

## ● Voltage & Current

| Item               | Conditions | Min | Typ | Max | Unit |
|--------------------|------------|-----|-----|-----|------|
| Power Voltage      | -          | 12  | 12  | 36  | V    |
| Current parameters | -          | -   | 420 | -   | mA   |

Recommended power supply: 12V 1A DC

## ● Reliability Test

| Item                | Conditions           | Min | Typ | Max | Unit |
|---------------------|----------------------|-----|-----|-----|------|
| Working Temperature | 60%RH at 12V voltage | 0   | 25  | 50  | ℃    |
| Storage Temperature | -                    | -20 | 25  | 60  | ℃    |
| Working Humidity    | 25℃                  | 10% | 60% | 90% | RH   |

## ● Interface

| Item          | Description                     |
|---------------|---------------------------------|
| Socket        | Power interface, HDMI interface |
| USB Interface | Yes                             |
| SD Card Slot  | None                            |

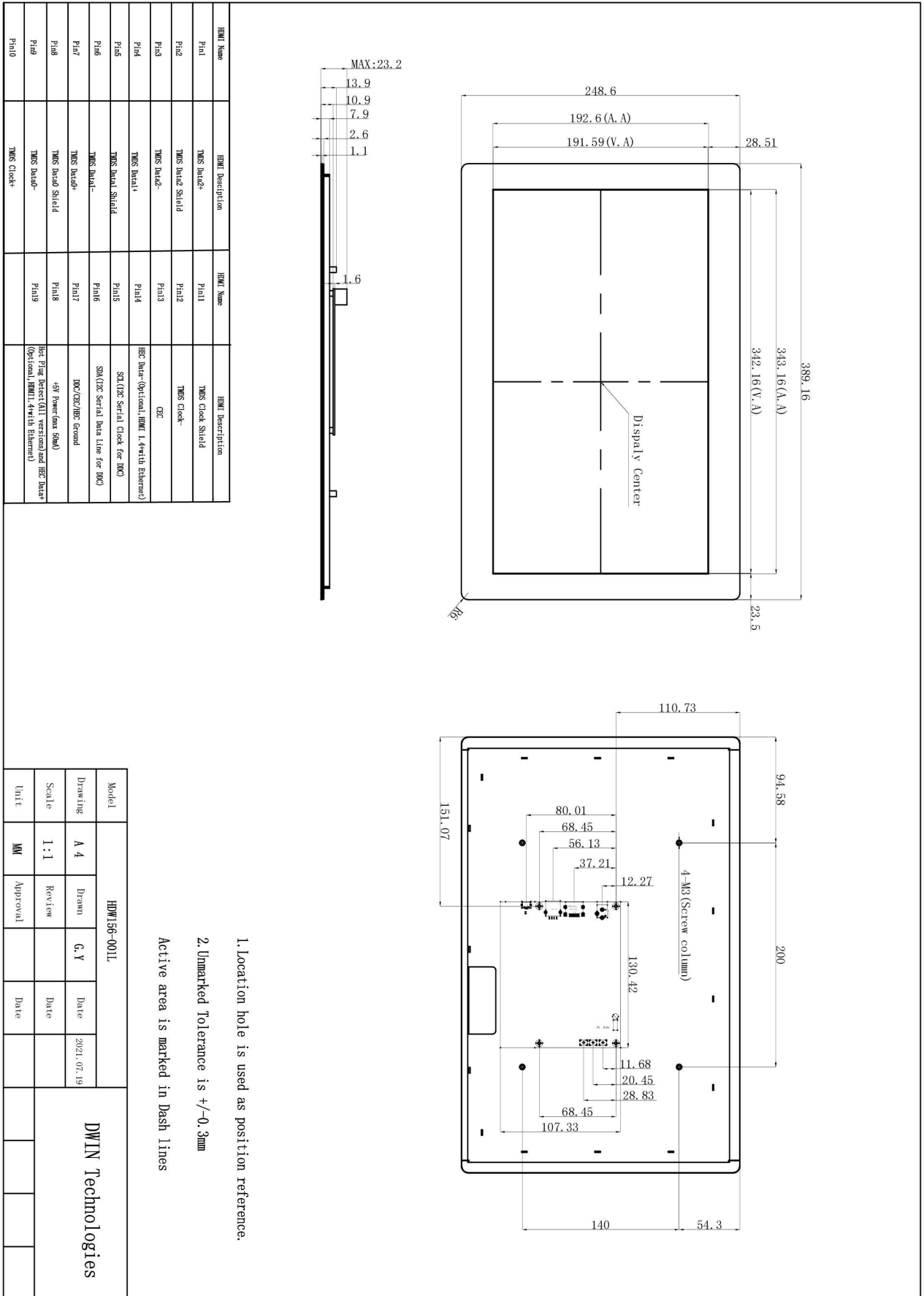
## ● Peripheral

|            |                        |
|------------|------------------------|
| Peripheral | Capacitive touch panel |
|------------|------------------------|

## ● Packing Capacity & Dimension

| Dimension        |                              |       |                |               |
|------------------|------------------------------|-------|----------------|---------------|
| Dimension        | 389.16(W)×248.6(H)×23.2(T)mm |       |                |               |
| Net Weight       | 1660g                        |       |                |               |
| Packing Capacity |                              |       |                |               |
| Model            | Size                         | Layer | Quantity/Layer | Quantity(Pcs) |
| Carton1:         | 525mm(L)×330mm(W)×80mm(H)    | 1     | 1              | 1             |
| Carton2:         | 570mm(L)×340mm(W)×385mm(H)   | 1     | 5              | 5             |

Disclaimer: The product design is subject to alternation and improvement without prior notice.



1. Location hole is used as position reference.  
 2. Unmarked Tolerance is +/-0.3mm  
 Active area is marked in Dash lines

|         |       |             |     |      |            |
|---------|-------|-------------|-----|------|------------|
| Model   |       | HDW156-001L |     |      |            |
| Drawing | A 4   | Drawn       | G.Y | Date | 2021.07.19 |
| Scale   | 1 : 1 | Review      |     | Date |            |
| Unit    | MM    | Approval    |     | Date |            |

DWIN Technologies