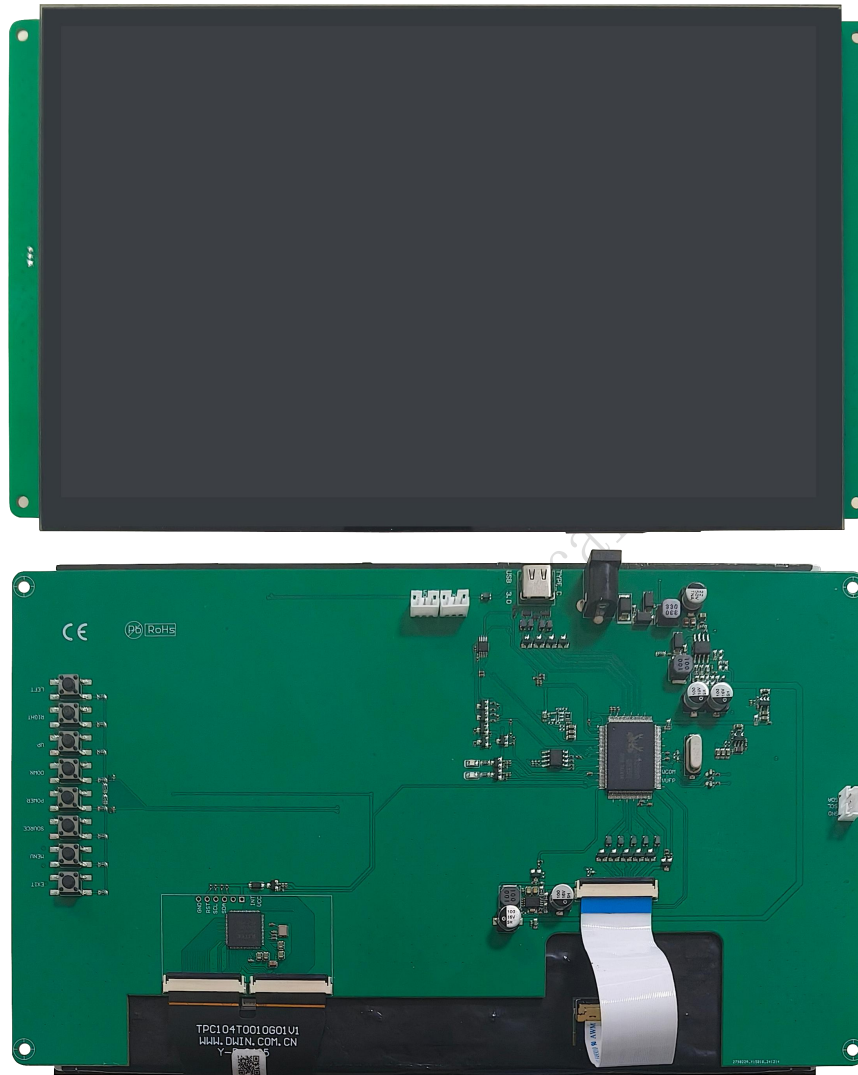


HDW101_007LDP

10.1 Inch, 1280xRGBx800, IPS screen

CTP, DP interface display



● Display Parameters

LCD Type	IPS, TFT LCD
Viewing Angle	Wide viewing angle (85°/85°/85°/85° typical), high contrast, and good color reproduction.
Resolution	1280×800 Pixel
Active Area (AA)	216.96mm (W)×135.60mm (H)
Viewing Area (VA)	217.36mm (W)×136.00mm (H)
Backlight Service Life	>20000H
Brightness	500nit
Note: Use dynamic screen saver to prevent afterimages from prolonged fixed page display.	

● Touch Parameters

Touch Panel	Capacitive touch panel
Material	Tempered cover glass

● Electrical Specifications

Power Voltage	5V
Current Parameters	580mA@5V
Recommended power supply: 5V 1A DC.	

● Operating Environment & Reliability Test

Item	Conditions	Min	Typ	Max	Unit
Operation Temperature	60%RH at 5V voltage	-20	25	70	℃
Storage Temperature	-	-30	25	80	℃
Operation Humidity	25℃	10%	60%	90%	RH
Anti-UV	Y				
ESD	Air discharge: ± 8kV; Contact discharge: ± 6kV				

● Hardware Interface

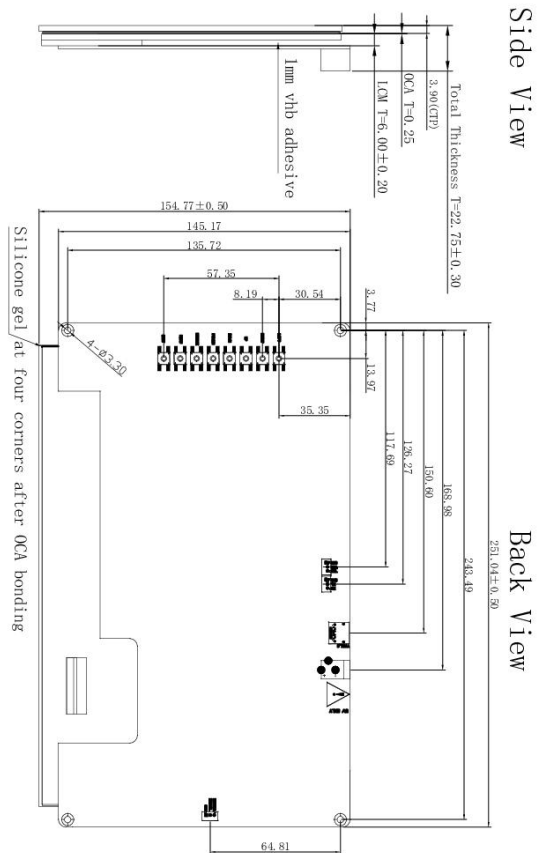
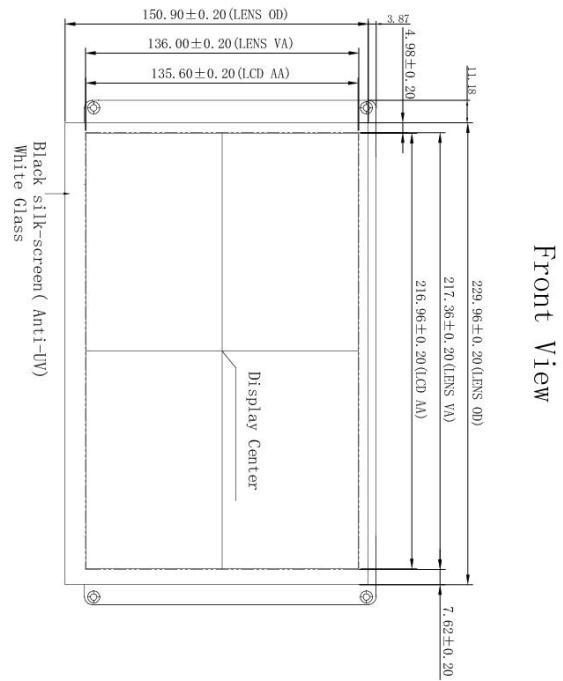
Power Interface	3PIN_Φ2.0DH
Display/Touch Interface	DP port (Type_C) : Integrated display and touch interface.
Two power supply modes: Mode 1: Connect power interface; Mode 2: Only connect DP interface(Type_C), the interface supports 5V1A power supply (note the host's power).	

● Packing & Dimension

Dimension	229.96(W)×150.90(H)×22.75(T)mm			
Net Weight	640g			
Model	Dimensions	Layer	Qty/Layer	Qty (pcs)
Carton1:	220mm(L)×160mm(W)×47mm (H)	-	-	-
Carton2:	250mm(L)×200mm(W)×80mm (H)	-	-	-
Carton3:	320mm(L)×270mm(W)×80mm (H)	-	-	-
Carton4:	435mm(L)×335mm(W)×290mm(H)	-	-	-
Carton5:	600mm(L)×430mm(W)×290mm(H)	1	20	20

● Key Definition

Pin	Definition	Explanation
1	EXIT	Exit interface button
2	MENU	Enter menu button
3	SOURCE	Signal source switching button
4	POWER	Power switch button
5	DOWN	Up button
6	UP	Down button
7	RIGHT	Left adjustment button
8	LEFT	Right adjustment button



REVISION RECORD		VER	DATE	DWIN Technology	
1	First Release	VI-1	20240601	FILE NAME : HDW101_007LDP	TOLERANCES : ±0.1°
2				CUSTOMER NAME :	DATE : 20241116
3				DESIGN :	SCALE : 1:1
4				DRAWN BY :	DATE : 20241116
5				CHECKED BY :	DATE : 20241116
6				APPROVED BY :	DATE : 20241116

● Revision Records

Rev	Revise Date	Content	Editor
00	2024-05-22	First Edition	Chen
01	2025-11-28	Add power supply descriptio	Chen

Please contact us if you have any questions about the use of this document or our products, or if you would like to know the latest information about our products:

Customer service Tel: +86-400-018-9008

Customer service E-mail: dwinhmi@dwin.com.cn

Website: www.dwin-global.com

DWIN Developer Forum: <https://forums.dwin-global.com/index.php/forums>

Thank you all for continuous support of DWIN, and your approval is the driving force of our progress!

Important Disclaimer

DWIN reserves the right to make any changes to product designs without prior notice.

Customers should ensure strictly adhering to all the relevant standards and requirements during the product application process, including but not limited to functional safety, information security, and regulatory provisions.

DWIN shall not bear any joint and several liability for any consequences that may arise from customers' adoption of DWIN products. In particular, for risks that may lead to significant property losses, environmental hazards, personal injury, or even death, especially in high-risk application areas such as military applications, flammable and explosive places, and life-saving medical equipment, customers should independently assess the risks and take corresponding preventive and protective measures. DWIN shall not bear any relevant responsibility.

DWIN Technology Technical Document