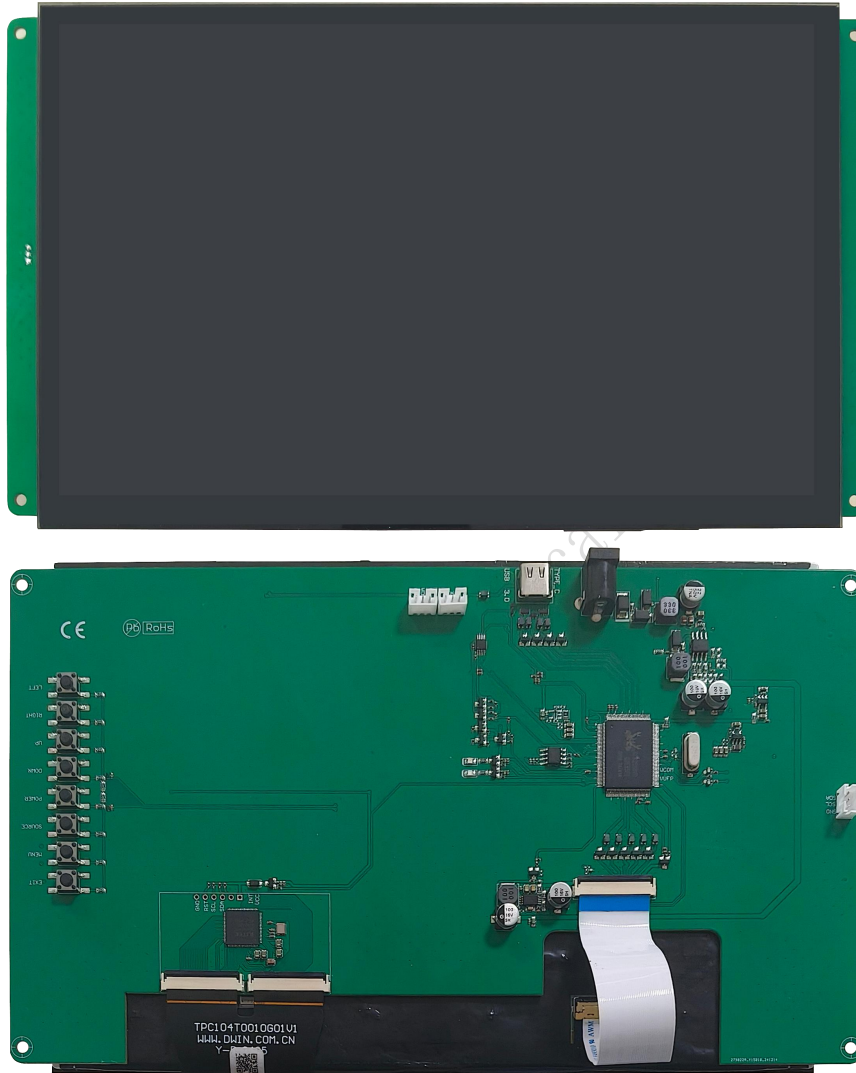


HDW101_007LDP

10.1 Inch, 1280xRGBx800, IPS screen

CTP, DP interface display



● Display Parameters

| | |
|--|---|
| LCD Type | IPS, TFT LCD |
| Viewing Angle | Wide viewing angle (85°/85°/85°/85° typical), high contrast, and good color reproduction. |
| Resolution | 1280×800 Pixel |
| Active Area (AA) | 216.96mm (W)×135.60mm (H) |
| Viewing Area (VA) | 217.36mm (W)×136.00mm (H) |
| Backlight Service Life | >20000H |
| Brightness | 500nit |
| Note: Use dynamic screen saver to prevent afterimages from prolonged fixed page display. | |

● Touch Parameters

| | |
|--------------------|------------------------|
| Touch Panel | Capacitive touch panel |
| Material | Tempered cover glass |

● Electrical Specifications

| | |
|-------------------------------------|----------|
| Power Voltage | 5V |
| Current Parameters | 580mA@5V |
| Recommended power supply: 5V 1A DC. | |

● Operating Environment & Reliability Test

| Item | Conditions | Min | Typ | Max | Unit |
|------------------------------|--|-----|-----|-----|------|
| Operation Temperature | 60%RH at 5V voltage | -20 | 25 | 70 | ℃ |
| Storage Temperature | - | -30 | 25 | 80 | ℃ |
| Operation Humidity | 25℃ | 10% | 60% | 90% | RH |
| Anti-UV | Y | | | | |
| ESD | Air discharge: ± 8kV; Contact discharge: ± 6kV | | | | |

● Hardware Interface

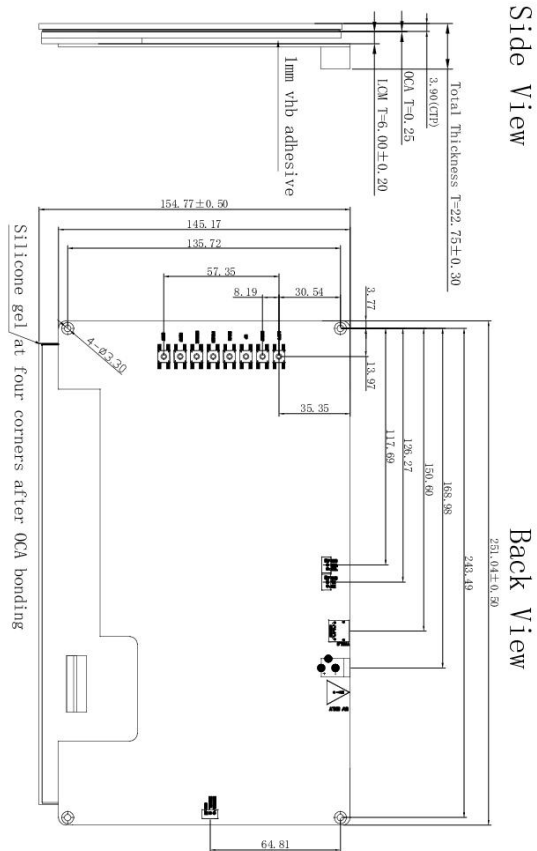
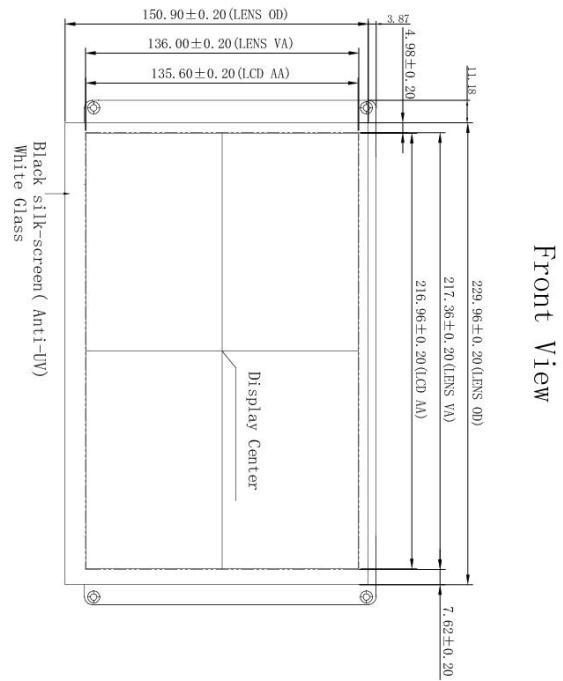
| | |
|--------------------------------|--|
| Power Interface | 3PIN_Φ2.0DH |
| Display/Touch Interface | DP port (Type_C) : Integrated display and touch interface. |

● Packing & Dimension

| | | | | |
|-------------------|--------------------------------|--------------|------------------|------------------|
| Dimension | 229.96(W)×150.90(H)×22.75(T)mm | | | |
| Net Weight | 640g | | | |
| Model | Dimensions | Layer | Qty/Layer | Qty (pcs) |
| Carton1: | 220mm(L)×160mm(W)×47mm (H) | - | - | - |
| Carton2: | 250mm(L)×200mm(W)×80mm (H) | - | - | - |
| Carton3: | 320mm(L)×270mm(W)×80mm (H) | - | - | - |
| Carton4: | 435mm(L)×335mm(W)×290mm(H) | - | - | - |
| Carton5: | 600mm(L)×430mm(W)×290mm(H) | 1 | 20 | 20 |

● Key Definition

| Pin | Definition | Explanation |
|-----|------------|--------------------------------|
| 1 | EXIT | Exit interface button |
| 2 | MENU | Enter menu button |
| 3 | SOURCE | Signal source switching button |
| 4 | POWER | Power switch button |
| 5 | DOWN | Up button |
| 6 | UP | Down button |
| 7 | RIGHT | Left adjustment button |
| 8 | LEFT | Right adjustment button |



| REVISION RECORD | | VER | DATE | DWIN Technology | |
|-----------------|---------------|------|----------|---------------------------|---------------------------|
| 1 | First Release | VI-1 | 20240601 | FILE NAME : HDW101_007LDP | TOLERANCES : ±0.1° |
| 2 | | | | CUSTOMER NAME : | STATUS : |
| 3 | | | | DESIGN : | RELEASE: V2-1 SCALE : 1:1 |
| 4 | | | | DRAWN BY : | DATE: 20241115 UNIT : mm |
| 5 | | | | CHECKED BY : | DATE : |
| 6 | | | | APPROVED BY : | DATE : |
| | | | | PRO. (I): | SHEET : 1/1 |

● Revision Records

| Rev | Revise Date | Content | Editor |
|-----|-------------|---------------|--------|
| 00 | 2024-05-22 | First Edition | Chen |

Please contact us if you have any questions about the use of this document or our products, or if you would like to know the latest information about our products:

Customer service Tel: +86-400-018-9008

Customer service E-mail: dwinhmi@dwin.com.cn

Website: www.dwin-global.com

DWIN Developer Forum: <https://forums.dwin-global.com/index.php/forums>

Thank you all for continuous support of DWIN, and your approval is the driving force of our progress!

Important Disclaimer

DWIN reserves the right to make any changes to product designs without prior notice.

Customers should ensure strictly adhering to all the relevant standards and requirements during the product application process, including but not limited to functional safety, information security, and regulatory provisions.

DWIN shall not bear any joint and several liability for any consequences that may arise from customers' adoption of DWIN products. In particular, for risks that may lead to significant property losses, environmental hazards, personal injury, or even death, especially in high-risk application areas such as military applications, flammable and explosive places, and life-saving medical equipment, customers should independently assess the risks and take corresponding preventive and protective measures. DWIN shall not bear any relevant responsibility.

DWIN Technology Technical Document