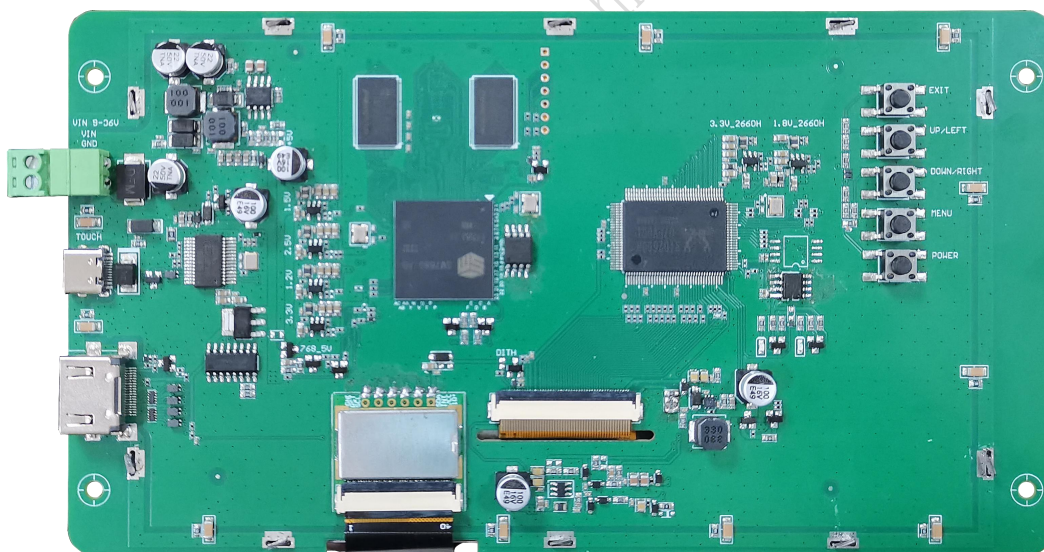
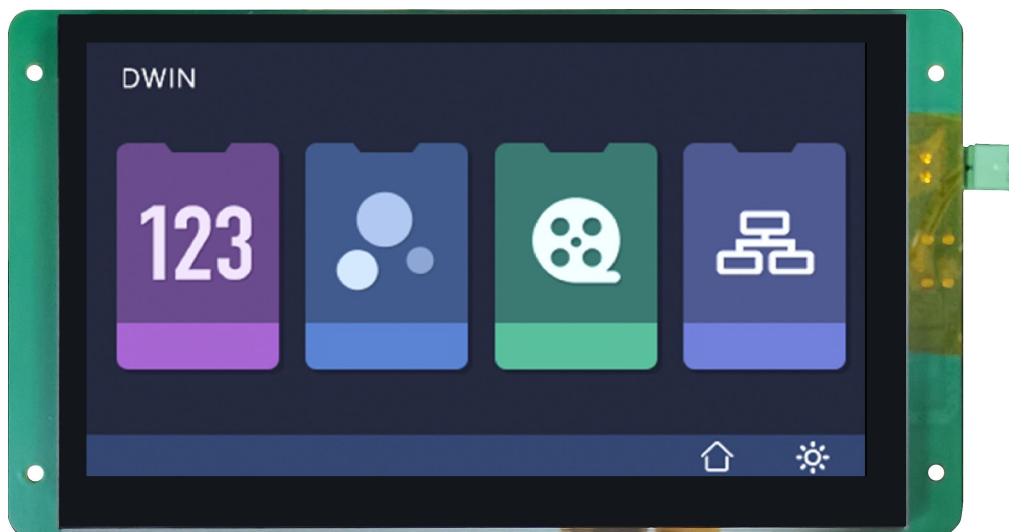


HDW070_DPL001

7.0 Inch, 800xRGBx480, TN screen

CTP, HDMI interface display



● Display Parameters

LCD Type	TN, TFT LCD.
Viewing Angle	Normal viewing angle, 70°/70°/50°/70° (L/R/U/D)
Resolution	800×480 Pixel
Active Area (AA)	154.08mm (W)×85.92mm (H)
View Area (VA)	154.08mm (W)×85.92mm (H)
Backlight Service Life	>30000H
Brightness	250nit
Note: Use dynamic screen saver to prevent afterimages from prolonged fixed page display.	

● Touch Parameters

Touch Panel	Capacitive touch panel
--------------------	------------------------

● Electrical Specifications

Power Voltage	9-36V, typical value 12V.	
Current Parameters	430mA	VCC=12V (Standard supply voltage)
Recommended power supply: 12V 1A DC.		

● Operating Environment & Reliability Test

Item	Conditions	Min	Typ	Max	Unit
Operation Temperature	60%RH at 12V voltage	-20	25	70	°C
Storage Temperature	-	-30	25	80	°C
Operation Humidity	25°C	10%	60%	90%	RH
ESD	Air:±8KV ; Contact discharge: ±6KV				
CE	ClassB-6dB				
RE	ClassB-6dB				

● Hardware Interface

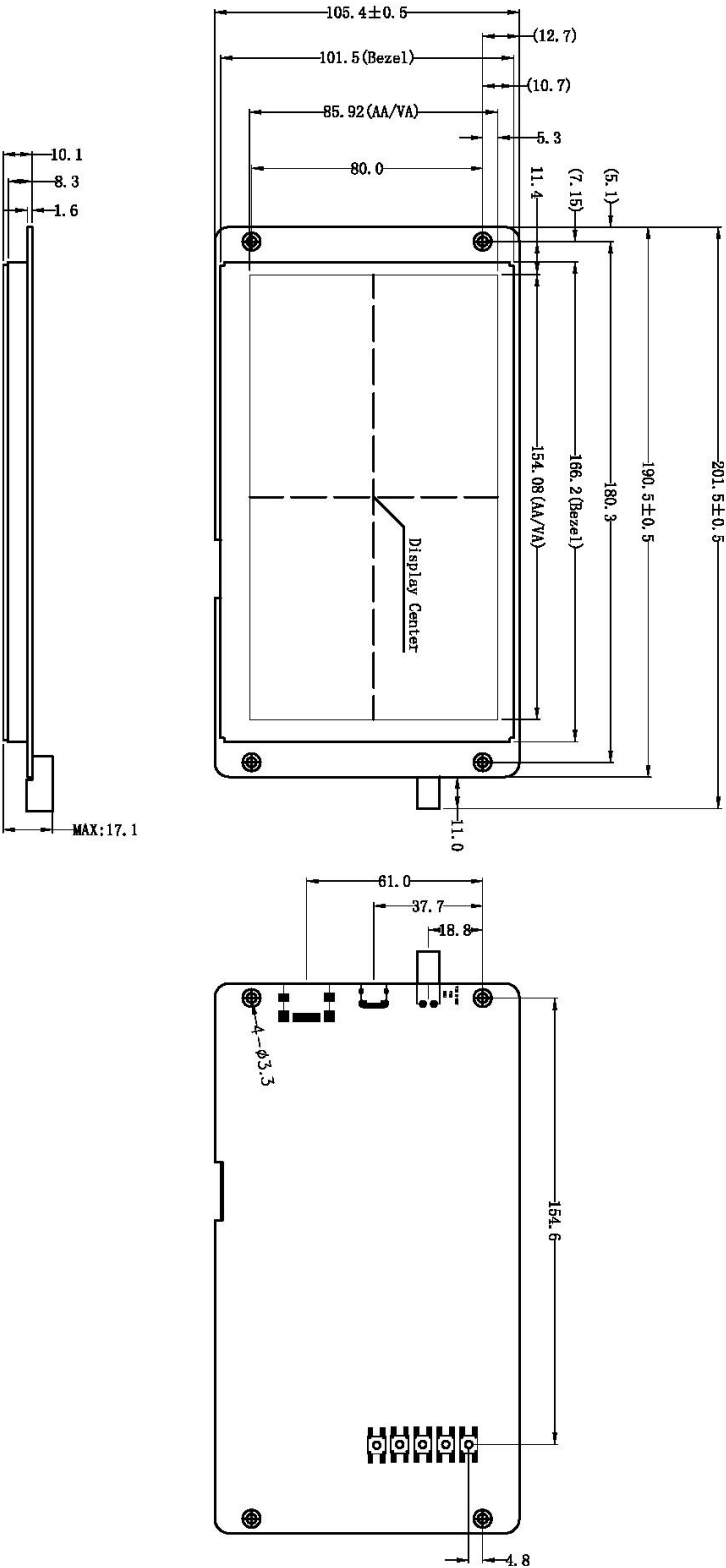
Power Interface	2PIN_3.81DHSFM
Display Interface	HDMI port (23PIN_HDMI_SH) TYPE-C(14PIN_USBSHSC)
Touch Interface	TYPE-C(14PIN_USBSHSC)
<p>Two display modes:</p> <p>Mode 1: Connect the display interface HDMI port + touch interface TPYE C;</p> <p>Mode 2: Only connect TYPE-C, at this time the interface has touch function + display function.</p> <p>Two power supply modes:</p> <p>Mode 1: Connect power interface;</p> <p>Mode 2: Only connect TYPE-C, the interface supports 5V1A power supply (note the host's power).</p>	

● OS Support

OS	Windows
----	---------

● Packing & Dimension

Dimension	201.50(W)×105.40(H)×17.10(T)mm			
Net Weight	285g			
Model	Dimensions	Layer	Qty/Layer	Qty (pcs)
Carton1	220mm(L)×160mm(W)×47mm (H)	-	-	-
Carton2	250mm(L)×200mm(W)×80mm (H)	2	1	2
Carton3	320mm(L)×270mm(W)×80mm (H)	-	-	-
Carton4	435mm(L)×335mm(W)×290mm(H)	1	10	10
Carton5	600mm(L)×430mm(W)×290mm(H)	1	30	30



Item Name	Item Description	Item Name	Item Description
Pin1	TMDS Data0+	Pin1	TMDS Clock Shield
Pin2	TMDS Data0 Shield	Pin2	TMDS Clock-
Pin3	TMDS Data0-	Pin3	DC
Pin4	TMDS Data1+	Pin4	REC Data- (Optional, DMIT 1.44x1.5 Ribbon)
Pin5	TMDS Data1 Shield	Pin5	SDA (I2C Serial, Clock for DDC)
Pin6	TMDS Data1-	Pin6	SM (I2C Serial, Data Line for DDC)
Pin7	TMDS Data0+	Pin7	DDC/CEP/REC Ground
Pin8	TMDS Data0 Shield	Pin8	+5V Power (Data Shield)
Pin9	TMDS Data0-	Pin9	Best Pining Pinout (All versions) and REC Invert (Optional, DMIT 1.44x1.5 Ribbon)
Pin10	TMDS Clock-	Pin10	

Location hole is used as position reference.

Unmarked Tolerance is +/-0.3mm

Active area is marked in Dash lines

Model				HDW070 DPL001			
Drawing	A 4	Drawn	DWIN	Date	250116		
Scale	1:1	Reviewer		Date			
Unit	MM	Approval		Date			

DWIN Technology

● Revision Records

Rev	Revise Date	Content	Editor
00	2025-01-22	First Edition	Chen
01	2025-11-28	Add power supply description	Chen

Please contact us if you have any questions about the use of this document or our products, or if you would like to know the latest information about our products:

Customer service Tel: +86-400-018-9008

Customer service E-mail: dwinhmi@dwin.com.cn

Website: www.dwin-global.com

DWIN Developer Forum: <https://forums.dwin-global.com/index.php/forums>

Thank you all for continuous support of DWIN, and your approval is the driving force of our progress!

Important Disclaimer

DWIN reserves the right to make any changes to product designs without prior notice.

Customers should ensure strictly adhering to all the relevant standards and requirements during the product application process, including but not limited to functional safety, information security, and regulatory provisions.

DWIN shall not bear any joint and several liability for any consequences that may arise from customers' adoption of DWIN products. In particular, for risks that may lead to significant property losses, environmental hazards, personal injury, or even death, especially in high-risk application areas such as military applications, flammable and explosive places, and life-saving medical equipment, customers should independently assess the risks and take corresponding preventive and protective measures. DWIN shall not bear any relevant responsibility.

DWIN Technology Technical Document