

HDW070_A5001L

7.0 Inch, 1024xRGBx600, IPS screen

CTP, HDMI interface display



● Display Parameters

LCD Type	IPS, TFT LCD
Viewing Angle	Wide viewing angle (85°/85°/85°/85° typical), high contrast, and good color reproduction
Resolution	1024×600 Pixel
Active Area (AA)	154.20mm (W)×85.88mm (H)
View Area (VA)	155.00mm (W)×87.50mm (H)
Backlight Service Life	>20000H
Brightness	250nit
Note: Use dynamic screen saver to prevent afterimages from prolonged fixed page display.	

● Touch Parameters

Touch Panel	Capacitive touch panel
Material	Tempered cover glass
Hardness	6H

● Electrical Specifications

Power Voltage	6-36V, typical value 12V.	
Current Parameters	350mA	VCC=6.0V (Minimum starting voltage)
	290mA	VCC=12V (Standard supply voltage)
	130mA	VCC=36V (Maximum supply voltage)
Recommended power supply: 12V 1A DC.		

● Operating Environment & Reliability Test

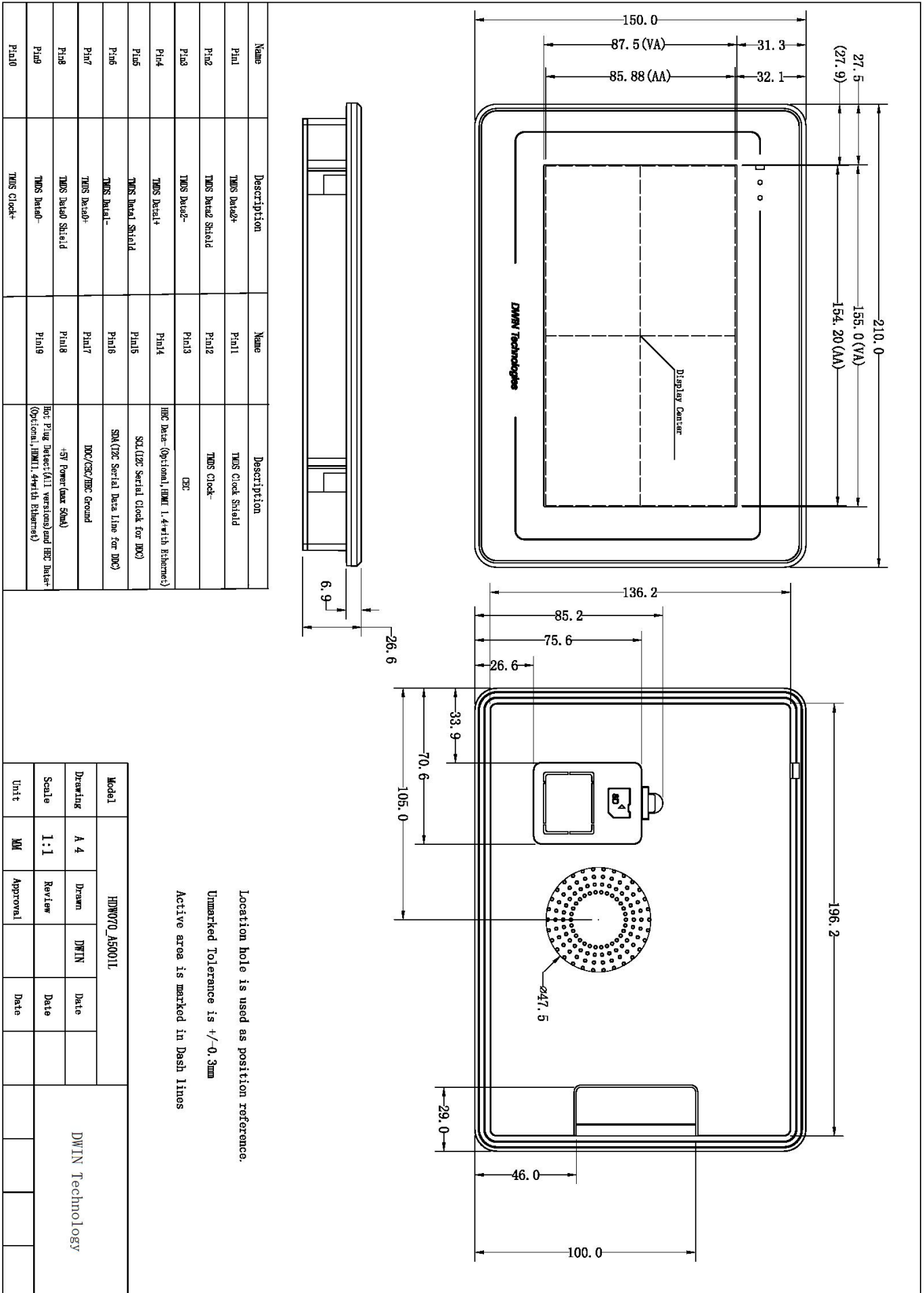
Item	Conditions	Min	Typ	Max	Unit
Operation Temperature	60%RH at 12V voltage	-20	25	70	°C
Storage Temperature	-	-30	25	80	°C
Operation Humidity	25°C	10%	60%	90%	RH
ESD	Air discharge: ±4KV				
Protective Level	IP65 (Front)				

● Hardware Interface

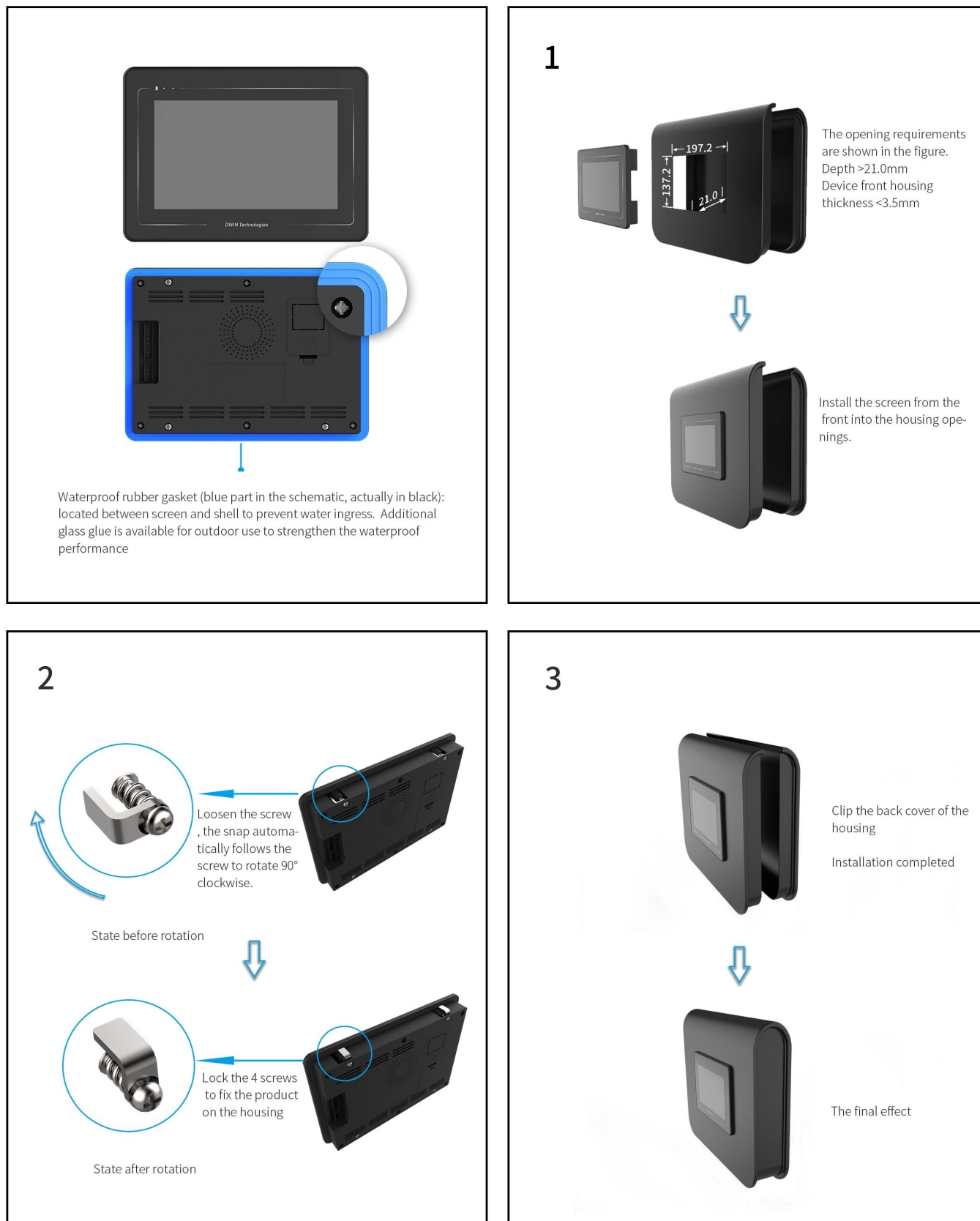
Power Interface	3PIN_DC_DVΦ2.1
Display Interface	HDMI port (HDMI_S)
Touch Interface	Horizontal USB 2.0

● Dimension

Dimension	210.00(W)×150.00(H)×26.60(T)mm
Net Weight	520g



Installation Schematic



● Revision Records

Rev	Revise Date	Content	Editor
00	2022-06-20	First Edition	YML
01	2025-09-16	Update CAD	Chen Xian

Please contact us if you have any questions about the use of this document or our products, or if you would like to know the latest information about our products:

Customer service Tel: +86-400-018-9008

Customer service E-mail: dwinhmi@dwin.com.cn

Website: www.dwin-global.com

DWIN Developer Forum: <https://forums.dwin-global.com/index.php/forums>

Thank you all for continuous support of DWIN, and your approval is the driving force of our progress!

Important Disclaimer

DWIN reserves the right to make any changes to product designs without prior notice.

Customers should ensure strictly adhering to all the relevant standards and requirements during the product application process, including but not limited to functional safety, information security, and regulatory provisions.

DWIN shall not bear any joint and several liability for any consequences that may arise from customers' adoption of DWIN products. In particular, for risks that may lead to significant property losses, environmental hazards, personal injury, or even death, especially in high-risk application areas such as military applications, flammable and explosive places, and life-saving medical equipment, customers should independently assess the risks and take corresponding preventive and protective measures. DWIN shall not bear any relevant responsibility.

DWIN Technology Technical Document