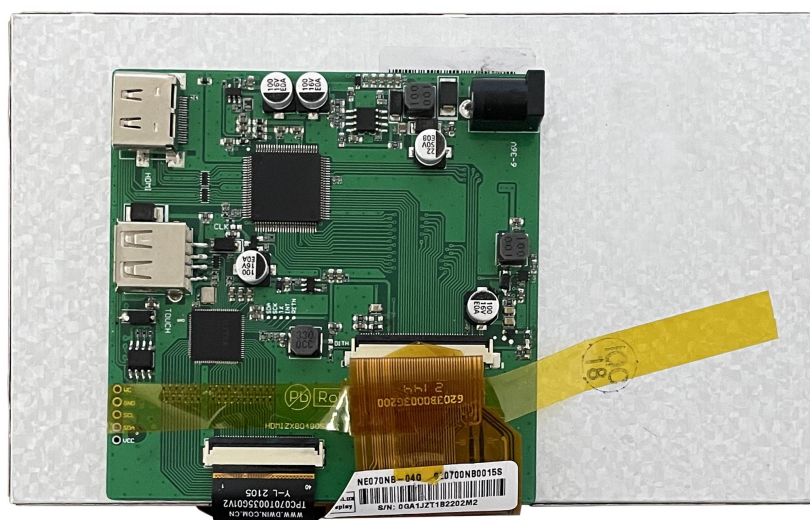


HDW070_008LZ02

7 Inch, 1024xRGBx600, 16.7M Colors, IPS screen

Capacitive Touch, HDMI interface display



● Display

Item	Parameter	Description
Color	16.7M(16777216)colors	24 bit color 8R8G8B
Panel Type	IPS	IPS TFT LCM ,wide viewing angle
Viewing Angle	85/85/85/85 (L/R/U/D)	Best View: symmetrical
Active Area (A.A.)	154.08mm(W)x85.92mm(H)	1024x600
View Area (V.A.)	154.08mm(W)x85.92mm(H)	1024x600
Resolution	1024*600	Support 0°/90°/180°/270°rotated display
Backlight	LED	≥20000H (Continuous working with maximum brightness, time of the brightness decays to 50%)
Brightness	600nit	-
Note:You can use dynamic screen saver wallpapers to avoid afterimages caused by fixed page display for a long time.		

● Voltage & Current

Item	Description	
Power Voltage	9~36V, typical value of 12V	
Current parameters	330mA	VCC=12V (Standard supply voltage)
Recommended power supply: 12V 1A DC		

● Reliability Test

Item	Conditions	Min	Typ	Max	Unit
Working Temperature	60%RH at 12V voltage	-20	25	70	℃
Storage Temperature	-	-30	25	80	℃
Working Humidity	25℃	10%	60%	90%	RH

● Interface

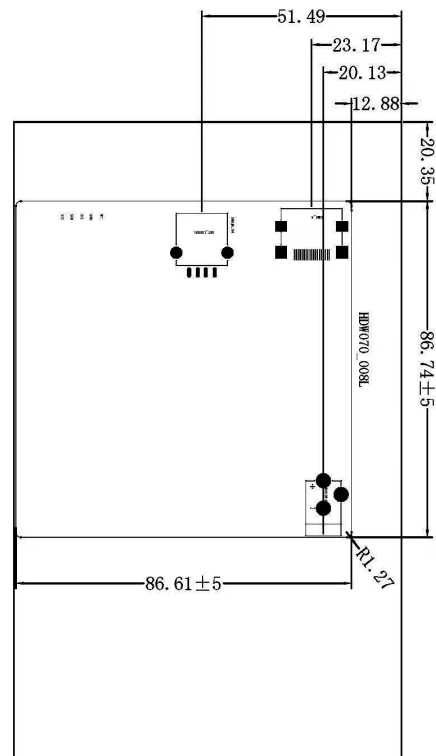
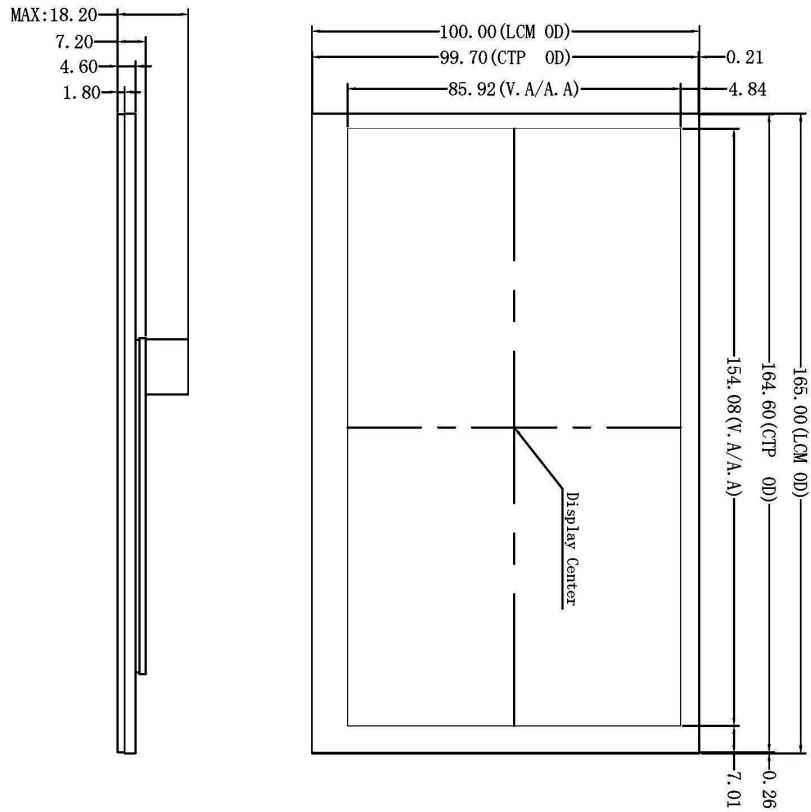
Item	Description
Socket	Power interface, HDMI interface
USB Interface	Yes

● Peripheral

Peripheral	Capacitive touch panel
------------	------------------------

● Packing Capacity & Dimension

Dimension				
Dimension	184.08(W)×115.92(H)×17.75(T)mm			
Net Weight	200g			
Packing Capacity				
Model	Size	Layer	Quantity/Layer	Quantity(Pcs)
Carton1:	220mm(L)×160mm(W)×47mm (H)	-	-	-
Carton2:	250mm(L)×200mm(W)×80mm (H)	2	1	2
Carton3:	320mm(L)×270mm(W)×80mm (H)	2	2	4
Carton4:	450mm(L)×350mm(W)×300mm(H)	1	20	20
Carton5:	600mm(L)×450mm(W)×300mm(H)	1	34	34



Pin	Signal	Pin	Signal	Pin	Signal
Pin1	TMS Data2	Pin11	TMS Clock Shield		
Pin2	TMS Data2 Shield	Pin12	TMS Clock		
Pin3	TMS Data2	Pin13	DC		
Pin4	TMS Data1	Pin14	REC Data (Optional, DM1.4 with Ethernet)		
Pin5	TMS Data1 Shield	Pin15	SE (DC Serial Clock for MD)		
Pin6	TMS Data1	Pin16	SM (DC Serial Data Line for MD)		
Pin7	TMS Data0	Pin17	MD/DC/REC Ground		
Pin8	TMS Data0 Shield	Pin18	+5V Power (max 500mA)		
Pin9	TMS Data0	Pin19	Rec Plug Detect (A1 version) and REC Data (Optional, DM1.4 with Ethernet)		
Pin10	TMS Clock				

1. Location hole is used as position reference.
2. Unmarked Tolerance is $\pm 0.3\text{mm}$
Active area is marked in Dash lines

Model	HDW070-008LZ02					DWIN Technologies				
Drawing	A 4	Drawn	J. G	Date	2022. 04. 12					
Scale	1 : 1	Review		Date						
Unit	MM	Approval		Date						

Record records

Ver	Revise Date	Content	Editor
00	2022-12-16	First Edition	Kaya
01	2025-01-21	Modify voltage	Chen

Please contact us if you have any questions about the use of this document or our products, or if you would like to know the latest information about our products:

Customer service Tel: +86-400-018-9008

Customer service E-mail: dwinhmi@dwin.com.cn

Website: www.dwin-global.com

DWIN Developer Forum: <https://forums.dwin-global.com/index.php/forums>

Thank you all for continuous support of DWIN, and your approval is the driving force of our progress!

Important Disclaimer

DWIN reserves the right to make any changes to product designs without prior notice.

Customers should ensure strictly adhering to all the relevant standards and requirements during the product application process, including but not limited to functional safety, information security, and regulatory provisions. DWIN shall not bear any joint and several liability for any consequences that may arise from customers' adoption of DWIN products. In particular, for risks that may lead to significant property losses, environmental hazards, personal injury, or even death, especially in high-risk application areas such as military applications, flammable and explosive places, and life-saving medical equipment, customers should independently assess the risks and take corresponding preventive and protective measures. DWIN shall not bear any relevant responsibility.