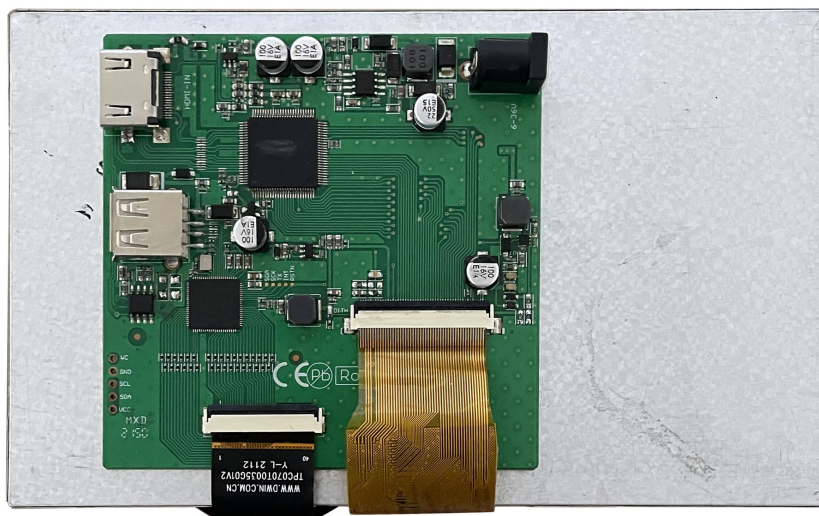


# HDW070\_008LZ01

**7 Inch, 800×RGB×480, 16.7M Colors, TN screen**

**Capacitive Touch, HDMI interface display**



## ● Display

Item	Parameter	Description
Color	16.7M(16777216)colors	24 bit color 8R8G8B
Panel Type	TN	TN TFT LCM, normal viewing angle
Viewing Angle	70/70/50/70(L/R/U/D)	-
Active Area (A.A.)	154.08mm(W) ×85.92mm(H)	800x480
View Area (V.A.)	154.08mm(W) ×85.92mm(H)	800x480
Resolution	800x480	-
Backlight	LED	≥20000H(Continuous working with maximum brightness, time of the brightness decays to 50%)
Brightness	800nit	-

Note: Displaying of high-contrast still images for more than 30 minutes may result in residual images. Please add screen saver to avoid this problem..

## ● Voltage & Current

Item	Description	
Power Voltage	9~36V, typical value of 12V	
Current parameters	210mA	VCC=12V (Standard supply voltage)
Recommended power supply: 12V 1A DC		

## ● Reliability Test

Item	Conditions	Min	Typ	Max	Unit
Working Temperature	60%RH at 12V voltage	-20	25	70	℃
Storage Temperature	-	-30	25	80	℃
Working Humidity	25℃	10%	60%	90%	RH
Electrostatic discharge test	Contact discharge	-	±6KV	-	-
	Air discharge	-	±8KV	-	-
EFT		-	±2KV	-	-

## ● Interface

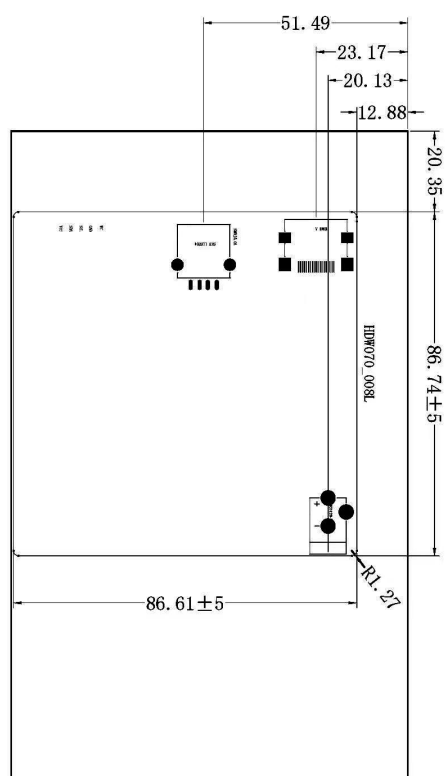
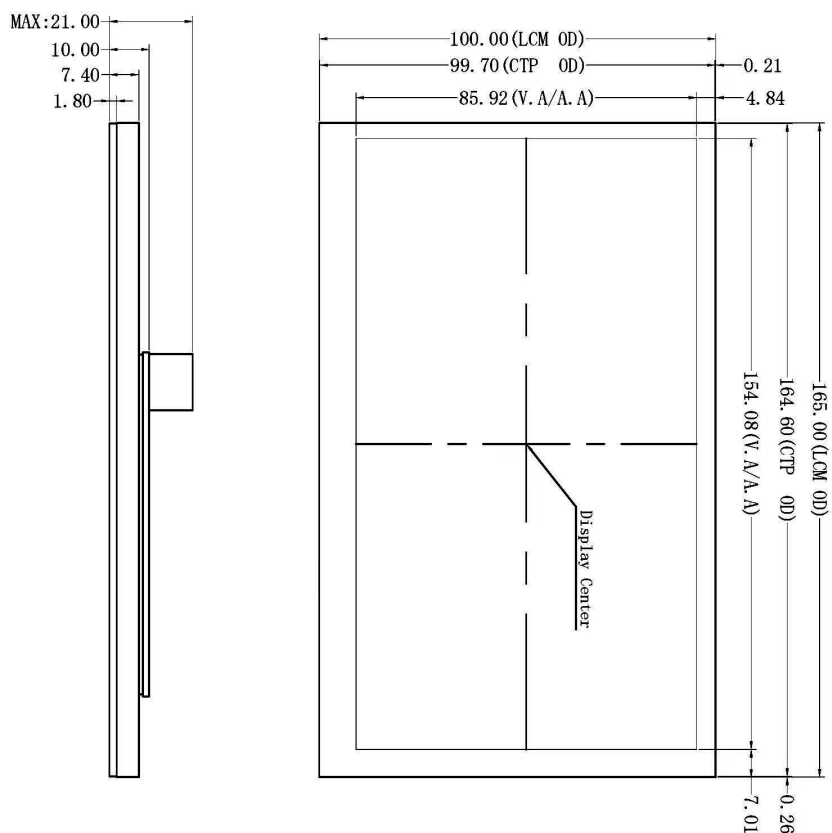
Item	Description
Socket	Power interface, HDMI interface
USB Interface	Yes (Connect USB capacitive touch screen)
SD Card Slot	None

## ● Peripheral

Peripheral	Capacitive touch panel
------------	------------------------

## ● Packing Capacity & Dimension

Dimension				
Dimension	165.0(W)×100.0(H)×18.7(T)mm			
Net Weight	245g			
Packing Capacity				
Model	Size	Layer	Quantity/Layer	Quantity(Pcs)
Carton1:	220mm(L)×160mm(W)×47mm (H)	-	-	-
Carton2:	250mm(L)×200mm(W)×80mm (H)	2	1	2
Carton3:	320mm(L)×270mm(W)×80mm (H)	2	2	4
Carton4:	450mm(L)×350mm(W)×300mm(H)	1	20	20
Carton5:	600mm(L)×450mm(W)×300mm(H)	1	34	34



HWMT	HWMT	HWMT	HWMT
Pin1	TMS Detect <sup>2</sup>	Pin11	TMS Clock Shield
Pin2	TMS Detect Shield	Pin12	TMS Clock <sup>3</sup>
Pin3	TMS Detect <sup>2</sup>	Pin13	CDC
Pin4	TMS Detect <sup>1</sup>	Pin14	REC Data (Optional, HWMT 1.4+ only, Ethernet)
Pin5	TMS Detect Shield	Pin15	SD (CDC Serial Clock for DDC)
Pin6	TMS Detect <sup>1</sup>	Pin16	SD (CDC Serial Data Line for DDC)
Pin7	TMS Detect <sup>0</sup>	Pin17	DDC/CDC/REC Ground
Pin8	TMS Detect0 Shield	Pin18	+5V Power (max 50mA)
Pin9	TMS Detect <sup>0</sup>	Pin19	REC Ping Detect (All versions) and REC Data (Optional, HWMT 1.4+ only Ethernet)
Pin10	TMS Clock <sup>3</sup>		

Model	HDW070-008L201				DWIN Technologies				
Drawing	A 4	Drawn	J. G	Date					2022.04.12
Scale	1:1	Review		Date					
Unit	MM	Approval		Date					

1. Location hole is used as position reference.
2. Unmarked Tolerance is  $\pm 0.3\text{mm}$

Active area is marked in Dash Lines

**Record records**

Ver	Revise Date	Content	Editor
00	2022-12-16	First Edition	Kaya
01	2025-01-21	Modify voltage	Chen

Please contact us if you have any questions about the use of this document or our products, or if you would like to know the latest information about our products:

Customer service Tel: +86-400-018-9008

Customer service E-mail: [dwinhmi@dwin.com.cn](mailto:dwinhmi@dwin.com.cn)

Website: [www.dwin-global.com](http://www.dwin-global.com)

DWIN Developer Forum: <https://forums.dwin-global.com/index.php/forums>

Thank you all for continuous support of DWIN, and your approval is the driving force of our progress!

**Important Disclaimer**

DWIN reserves the right to make any changes to product designs without prior notice.

Customers should ensure strictly adhering to all the relevant standards and requirements during the product application process, including but not limited to functional safety, information security, and regulatory provisions. DWIN shall not bear any joint and several liability for any consequences that may arise from customers' adoption of DWIN products. In particular, for risks that may lead to significant property losses, environmental hazards, personal injury, or even death, especially in high-risk application areas such as military applications, flammable and explosive places, and life-saving medical equipment, customers should independently assess the risks and take corresponding preventive and protective measures. DWIN shall not bear any relevant responsibility.