

HDW070_004L

7.0 Inch, 800xRGBx480, TN screen, RTP, LVDS interface display



● Display Parameters

LCD Type	TN TFT LCD
Viewing Angle	Normal viewing angle, 70° /70° /50° /70° (L/R/U/D)
Active area (AA)	154.1mm(W)x85.9mm(H)
Resolution	800x480 Pixel
Backlight Service Life	>30000H
Brightness	600nit

Note: Use dynamic screen saver to prevent afterimages from prolonged fixed page display

● Display Parameters

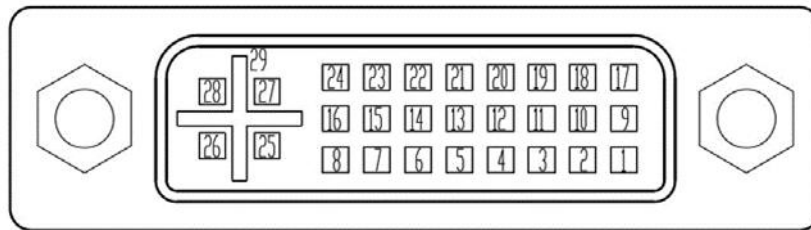
Touch Panel	Resistive touch screen
--------------------	------------------------

● Electrical Specifications

Power voltage	4.6-6V, typical value 5V	
Operating current	760mA	VCC=5V(Standard supply voltage)
Recommended power supply: 5V 1A DC		

● Electrical Specifications

Item	Conditions	Min	Typical	Max	Unit
Working temperature	60%RH at 5V voltage	-20	25	70	℃
Storage temperature	-	-30	25	85	℃
Operating humidity	25℃	10%	60%	90%	RH
Conformal coating	Yes				
Protection level	IP65(Front)				
UV resistant	1.35w/m2 @UVA-340nm 168h (Level F1)				
Shell flame retardant	UL 94-V0				
Salt spray test	GB/T2423.17-2008; 48h				

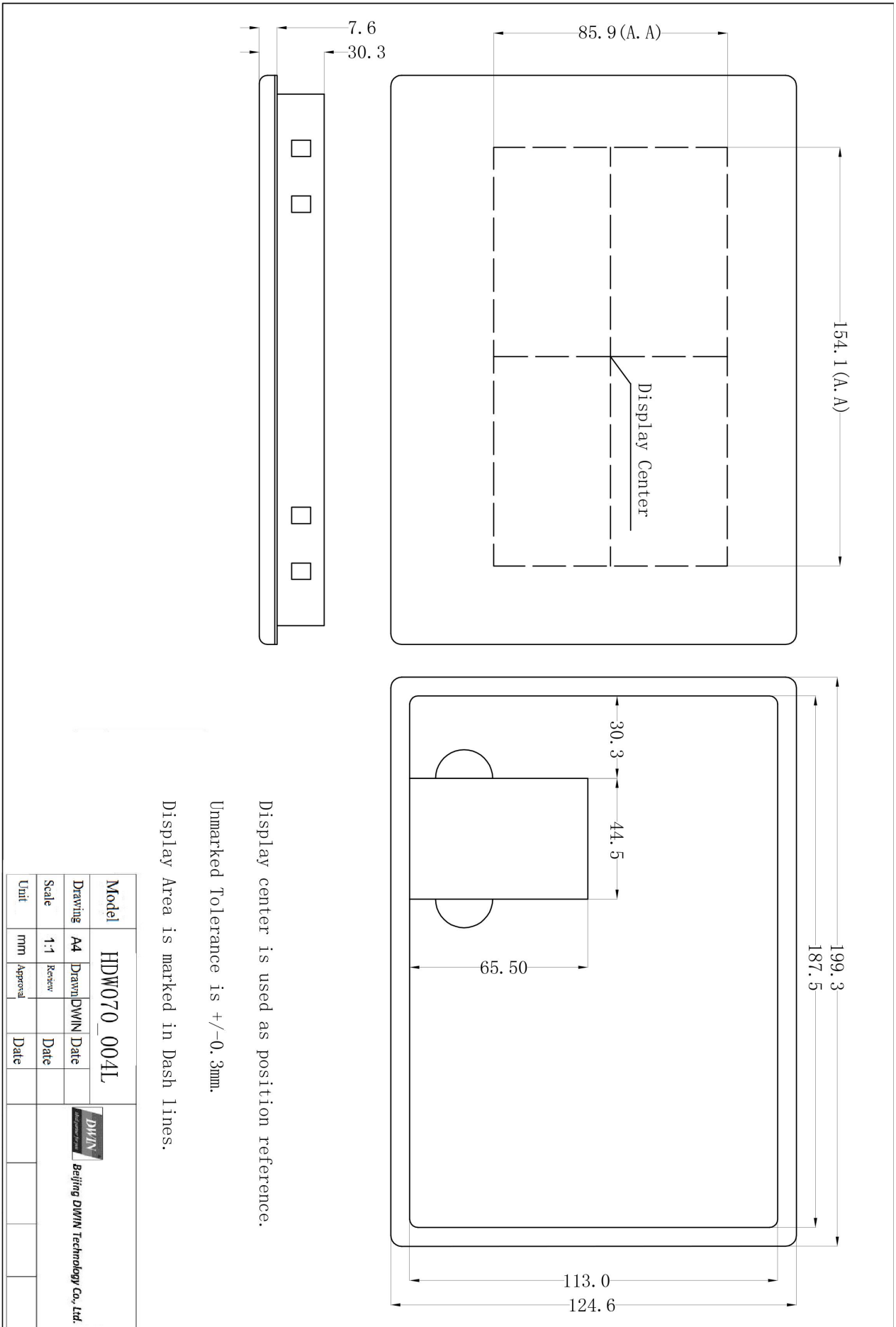


Pin	Name	Function	Description
1	RX2-	Input	-LVDS Differential data Input input
2	RX2+	Input	+ LVDS Differential data Input
3	GND	Power	GND
4	BL_PWM	Input	Backlight dimming control, PWM is used to adjust brightness output.
5	NC	-	NC
6	VDD	Power	5.0V Power Input
7	VDD	Power	5.0V Power Input
8	VDD	Power	5.0V Power Input
9	RX1-	Input	- LVDS Differential data Input
10	RX1+	Input	+LVDS Differential data Input
11	GND	Power	GND
12	RX3-	Input	-LVDS Differential data Input
13	RX3+	Input	+LVDS Differential data Input
14	VDD	Power	5.0V Power Input
15	GND	Power	GND
16	GND	Power	GND
17	RX0-	Input	- LVDS Differential data Input
18	RX0+	Input	+ LVDS Differential data Input
19	GND	Power	GND
20	USB_DM	I/O	USB D- signal
21	USB_DP	I/O	USB D+ signal
22	GND	Power	GND
23	RXCLK+	Input	Clock + LVDS Differential data Input
24	RXCLK-	Input	Clock - LVDS Differential data Input
25	VDD	Power	5.0V Power Input
26	VDD	Power	5.0V Power Input
27	NC	-	NC
28	NC	-	NC
29	GND	Power	GND

● Packing & Dimension

Dimension	199.3(mm)x124.6(mm)x30.3(mm)			
Net weight	450g			
Model	Size	Layer	Qty/Layer	Qty(Pcs)
Carton1:	220mm(L)*160mm(W)*47mm (H)	-	-	-
Carton2:	250mm(L)*200mm(W)*80mm (H)	2	1	2
Carton3:	320mm(L)*270mm(W)*80mm (H)	-	-	-
Carton4:	450mm(L)*350mm(W)*300mm(H)	-	-	-
Carton5:	600mm(L)*450mm(W)*300mm(H)	1	20	20

DWIN Technologies Technical Document



● Revision Records

Version	Revise date	Content	Editor
00	2023-07-25	First Edition	Kaya
01	2024-01-15	Revise color parameter	YML
02	2025-02-21	Modify Brightness Value	Chen

Please contact us if you have any questions about the use of this document or our products, or if you would like to know the latest information about our products:

Customer Service Tel: +86 400 018 9008

Customer Service Email: dwinhmi@dwin.com.cn

DWIN Developer Forum: <https://forums.dwin-global.com/>

Thank you all for continuous support of DWIN, and your approval is the driving force of our progress!

Important Disclaimer

DWIN reserves the right to make any changes to product designs without prior notice.

Customers should ensure strictly adhering to all the relevant standards and requirements during the product application process, including but not limited to functional safety, information security, and regulatory provisions. DWIN shall not bear any joint and several liability for any consequences that may arise from customers' adoption of DWIN products. In particular, for risks that may lead to significant property losses, environmental hazards, personal injury, or even death, especially in high-risk application areas such as military applications, flammable and explosive places, and life-saving medical equipment, customers should independently assess the risks and take corresponding preventive and protective measures. DWIN shall not bear any relevant responsibility.