

HDW043_A5001L

4.3 Inch, 480xRGBx800, 16.7M Colors, IPS screen

Capacitive touch, With shell, HDMI interface display



● Display

Item	Parameter	Description
Color	16.7M(16777216)colors	24 bit color 8R8G8B
Panel Type	IPS	IPS TFT LCM ,wide viewing angle
Viewing Angle	85/85/85/85 (L/R/U/D)	Best View: symmetrical
Active Area (A.A.)	93.20mm (W) × 55.76mm (H)	480×800
View Area (V.A.)	93.20mm (W) × 55.76mm (H)	480×800
Resolution	480×800	Support 0°/90°/180°/270°rotated display
Backlight	LED	≥20000H (Continuous working with maximum brightness, time of the brightness decays to 50%)
Brightness	250nit	-

Note: Displaying of high-contrast still images for more than 30 minutes may result in residual images. Please add screen saver to avoid this problem.

● Voltage & Current

Item	Descriptions	
Power Voltage	12~36V, typical value of 12V	
Current parameters	120mA	VCC=12V (Minimum starting voltage)
	120mA	VCC=12V (Standard supply voltage)
	80mA	VCC=36V (Maximum supply voltage)

Recommended power supply: 12V 1A DC

● Reliability Test

Item	Conditions	Min	Typ	Max	Unit
Working Temperature	60%RH at 12V voltage	-10	25	60	℃
Storage Temperature	-	-20	25	70	℃
Working Humidity	25℃	10%	60%	90%	RH
ESD	Air discharge ±4KV				

● Interface

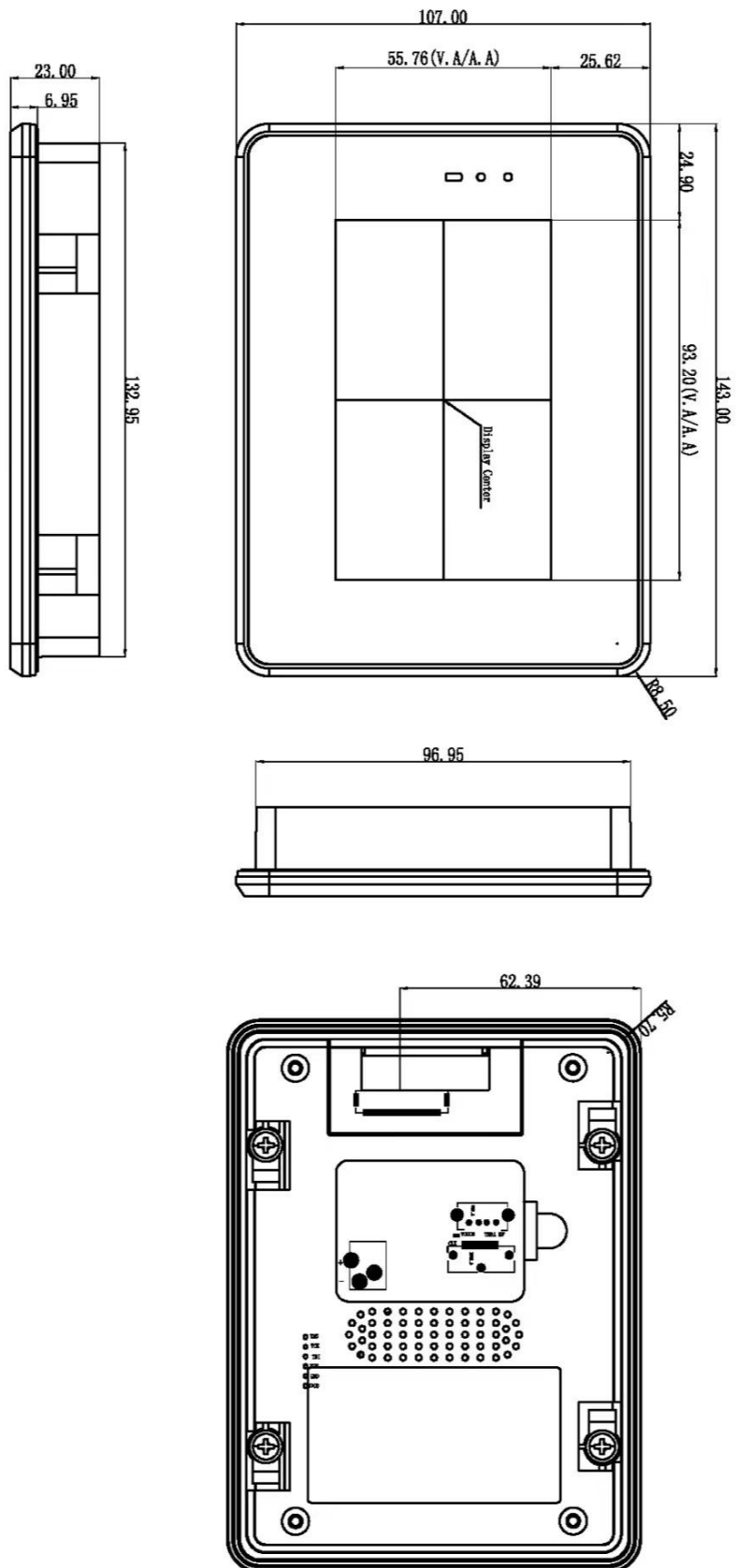
Item	Descriptions
Socket	12~36V power interface, HDMI interface, USB interface
USB Interface	Yes (Connect USB Capacitive touch screen)
SD Card Slot	None

● Peripheral

Peripheral	Capacitive touch panel
------------	------------------------

● Packing Capacity & Dimension

Dimension				
Dimension	143.0(W)*107.0(H)*23.0(T)mm			
Net Weight	280g			
Packing Capacity				
Model	Size	Layer	Quantity/Layer	Quantity(Pcs)
Carton1:	220mm(L)*160mm(W)*47mm(H)	1	1	1
Carton2:	250mm(L)*200mm(W)*80mm(H)	2	1	2
Carton3:	320mm(L)*270mm(W)*80mm(H)	-	-	-
Carton4:	450mm(L)*350mm(W)*300mm(H)	-	-	-
Carton5:	600mm(L)*450mm(W)*300mm(H)	1	30	30

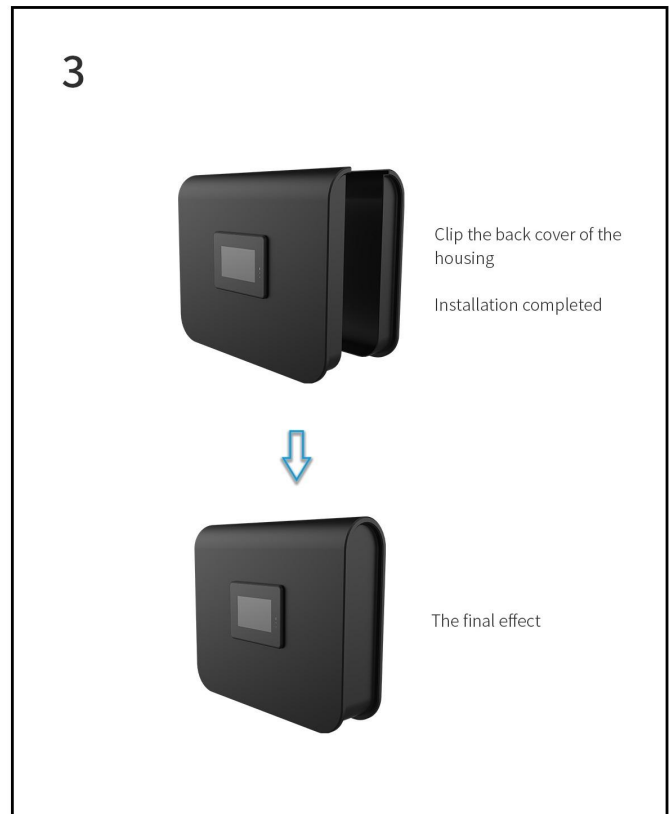
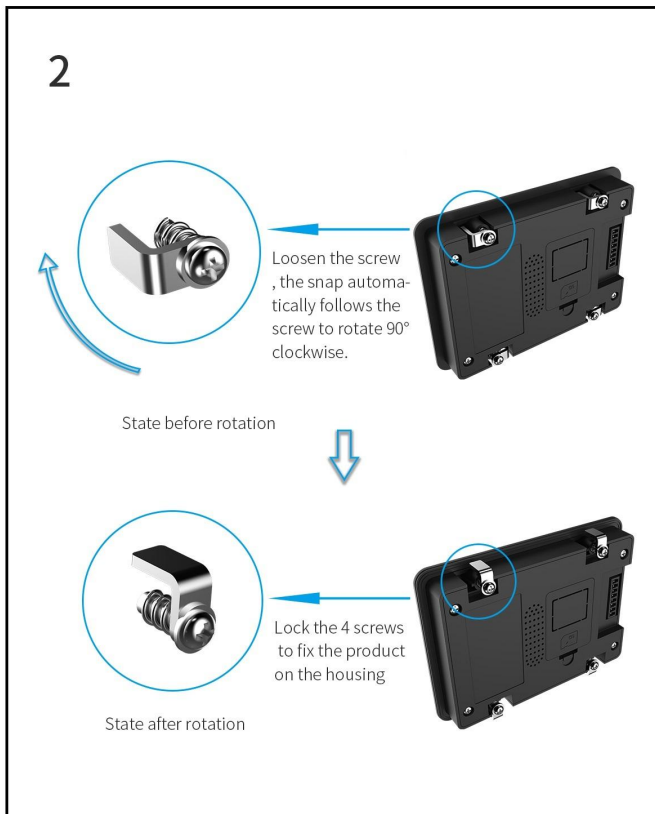
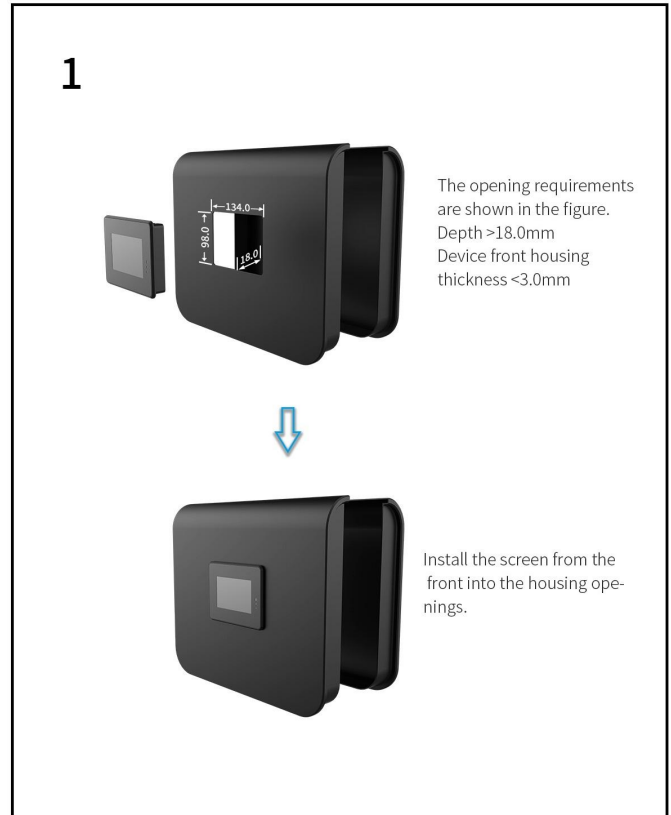
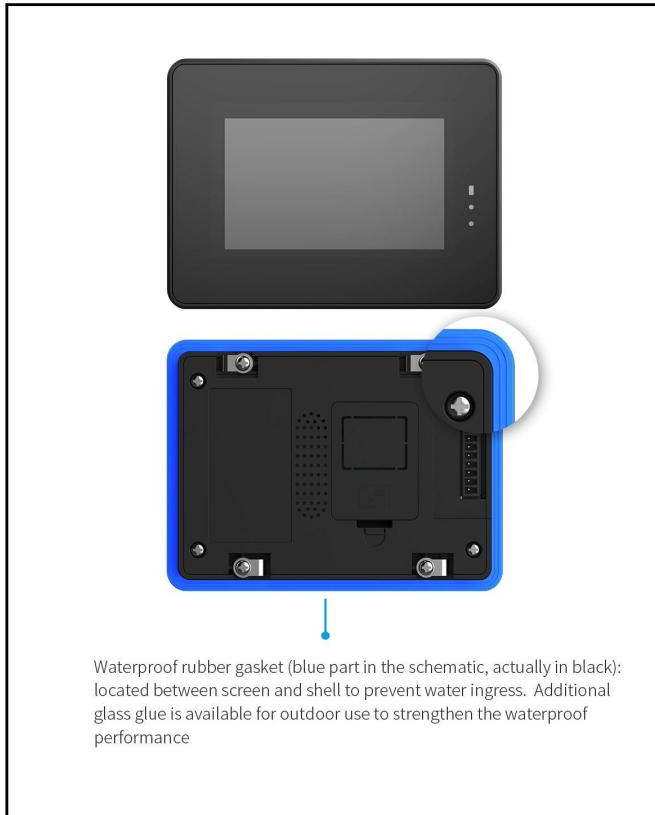


1. Location hole is used as position reference.
 2. Unmarked Tolerance is $\pm 0.3\text{mm}$
- Active area is marked in dash lines

Name	Description	Name	Description
Pin1	TMS Data2+	Pin11	TMS Clock Shield
Pin2	TMS Data2 Shield	Pin12	TMS Clock-
Pin3	TMS Data2-	Pin13	CDC
Pin4	TMS Data2+	Pin14	HIC Data-(Optional, HDMI 1.4+with Ethernet)
Pin5	TMS Data2 Shield	Pin15	SC12C Serial Clock for DDC
Pin6	TMS Data2-	Pin16	SDA12C Serial Data line for DDC
Pin7	TMS Data2 Shield	Pin17	DDC/CDC/HIC Ground
Pin8	TMS Data2 Shield	Pin18	+5V Power (aux 5V)
Pin9	TMS Data2-	Pin19	Hot Plug Detect (ALL version) and HIC Data-(Optional, HDMI 1.4+with Ethernet)
Pin10	TMS Clock+		

Model	HDW043-A5001L				DWIN Technologies			
Drawing	A 4	Drawn	G. Y	Date	2022.07.19			
Scale	1:1	Review		Date				
Unit	MM	Approval		Date				

Installation Schematic



**Record of Revision**

Rev	Revise Date	Content	Editor
00	2022-12-05	First Edition	Kaya
01	2024-05-13	Update Temperature Range	YML

Please contact us if you have any questions about the use of this document or our products, or if you would like to know the latest information about our products:

Customer service Tel: +86-400-018-9008

Customer service E-mail: dwinhmi@dwin.com.cn

Website: www.dwin-global.com

DWIN Developer Forum: <https://forums.dwin-global.com/index.php/forums>

Thank you all for continuous support of DWIN, and your approval is the driving force of our progress!

Important Disclaimer

DWIN reserves the right to make any changes to product designs without prior notice.

Customers should ensure strictly adhering to all the relevant standards and requirements during the product application process, including but not limited to functional safety, information security, and regulatory provisions.

DWIN shall not bear any joint and several liability for any consequences that may arise from customers' adoption of DWIN products. In particular, for risks that may lead to significant property losses, environmental hazards, personal injury, or even death, especially in high-risk application areas such as military applications, flammable and explosive places, and life-saving medical equipment, customers should independently assess the risks and take corresponding preventive and protective measures. DWIN shall not bear any relevant responsibility.