

HDW043_001L

4.3 Inch, 480xRGBx800, 16.7M Colors, IPS screen, Capacitive touch



DWIN Technology

● Display

| Item | Parameter | Description |
|--------------------|-------------------------|--|
| Color | 16.7M (16777216) colors | 24 bit color 8R8G8B |
| Panel Type | IPS | IPS process TFT LCM ,wide viewing angle |
| Viewing Angle | 85/85/85/85 (L/R/U/D) | Best View: symmetrical |
| Active Area (A.A.) | 93.6mm (W) x 56.2mm (H) | 480x800 |
| View Area (V.A.) | 94.0mm (W) x 56.6mm (H) | 480x800 |
| Resolution | 480x800 | - |
| Backlight | LED | >20000 hours (Time of the brightness decaying to 50% on the condition of continuous working with the maximum brightness) |
| Brightness | 250nit | - |

Note: Displaying of high-contrast still images for more than 30 minutes may result in residual images. Please add screen saver to avoid this problem.

● Voltage & Current

| Item | Conditions | Min | Typ | Max | Unit |
|-------------------|--------------------------|-----|-----|-----|------|
| Power Voltage | - | 3.6 | 5.0 | 6.0 | V |
| Operation Current | VCC = +5V, Backlight on | - | - | - | mA |
| | VCC = +5V, Backlight off | - | - | - | mA |

Recommended power supply: 5V 1A DC

● Reliability Test

| Item | Conditions | Min | Typ | Max | Unit |
|---------------------|---------------------|-----|------|-----|------|
| Working Temperature | 60%RH at 5V voltage | -10 | 25 | 60 | °C |
| Storage Temperature | - | -20 | 25 | 70 | °C |
| Working Humidity | 25°C | 10% | 60% | 90% | RH |
| Protective Paint | - | - | None | - | - |

● Interface

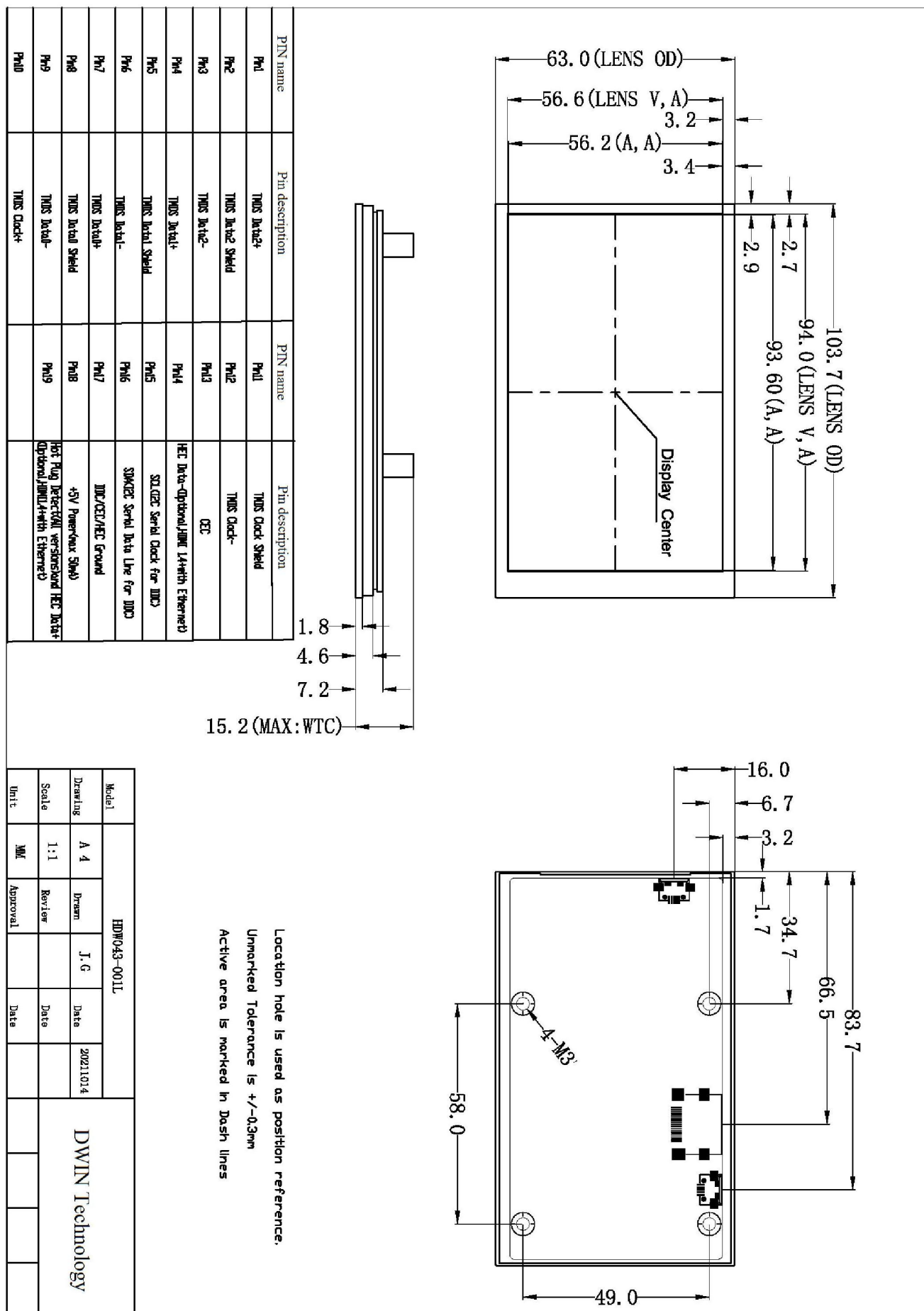
| Item | Description |
|---------------|----------------|
| Socket | HDMI interface |
| USB Interface | Yes |
| SD Card Slot | None |

● Peripheral

| Peripheral | |
|------------|------------------------|
| Peripheral | Capacitive touch panel |

● Packing Capacity & Dimension

| Dimension | | | | |
|------------------|------------------------------|-------|----------------|---------------|
| Dimension | 103.7(W)* 63.0(H)*15.20(T)mm | | | |
| Net Weight | 90g | | | |
| Packing Capacity | | | | |
| Model | Size | Layer | Quantity/Layer | Quantity(Pcs) |
| Carton1: | 220mm(L)*160mm(W)*47mm (H) | 1 | 2 | 2 |
| Carton2: | 250mm(L)*200mm(W)*80mm (H) | 2 | 2 | 4 |
| Carton3: | 320mm(L)*270mm(W)*80mm (H) | 2 | 4 | 8 |
| Carton4: | 450mm(L)*350mm(W)*300mm(H) | 2 | 30 | 60 |
| Carton5: | 600mm(L)*450mm(W)*300mm(H) | 2 | 60 | 120 |



Record records

| Rev | Revise Date | Content | Editor |
|-----|-------------|--------------------------|--------|
| 00 | 2022-12-15 | First Edition | Kaya |
| 01 | 2024-05-13 | Update Temperature Range | YML |
| 02 | 2025-11-17 | Update Picture | Chen |

Please contact us if you have any questions about the use of this document or our products, or if you would like to know the latest information about our products:

Customer service Tel: +86-400-018-9008

Customer service E-mail: dwinhmi@dwin.com.cn

Website: www.dwin-global.com

DWIN Developer Forum: <https://forums.dwin-global.com/index.php/forums>

Thank you all for continuous support of DWIN, and your approval is the driving force of our progress!

Important Disclaimer

DWIN reserves the right to make any changes to product designs without prior notice.

Customers should ensure strictly adhering to all the relevant standards and requirements during the product application process, including but not limited to functional safety, information security, and regulatory provisions.

DWIN shall not bear any joint and several liability for any consequences that may arise from customers' adoption of DWIN products. In particular, for risks that may lead to significant property losses, environmental hazards, personal injury, or even death, especially in high-risk application areas such as military applications, flammable and explosive places, and life-saving medical equipment, customers should independently assess the risks and take corresponding preventive and protective measures. DWIN shall not bear any relevant responsibility.