

DMG10600C101_04WN

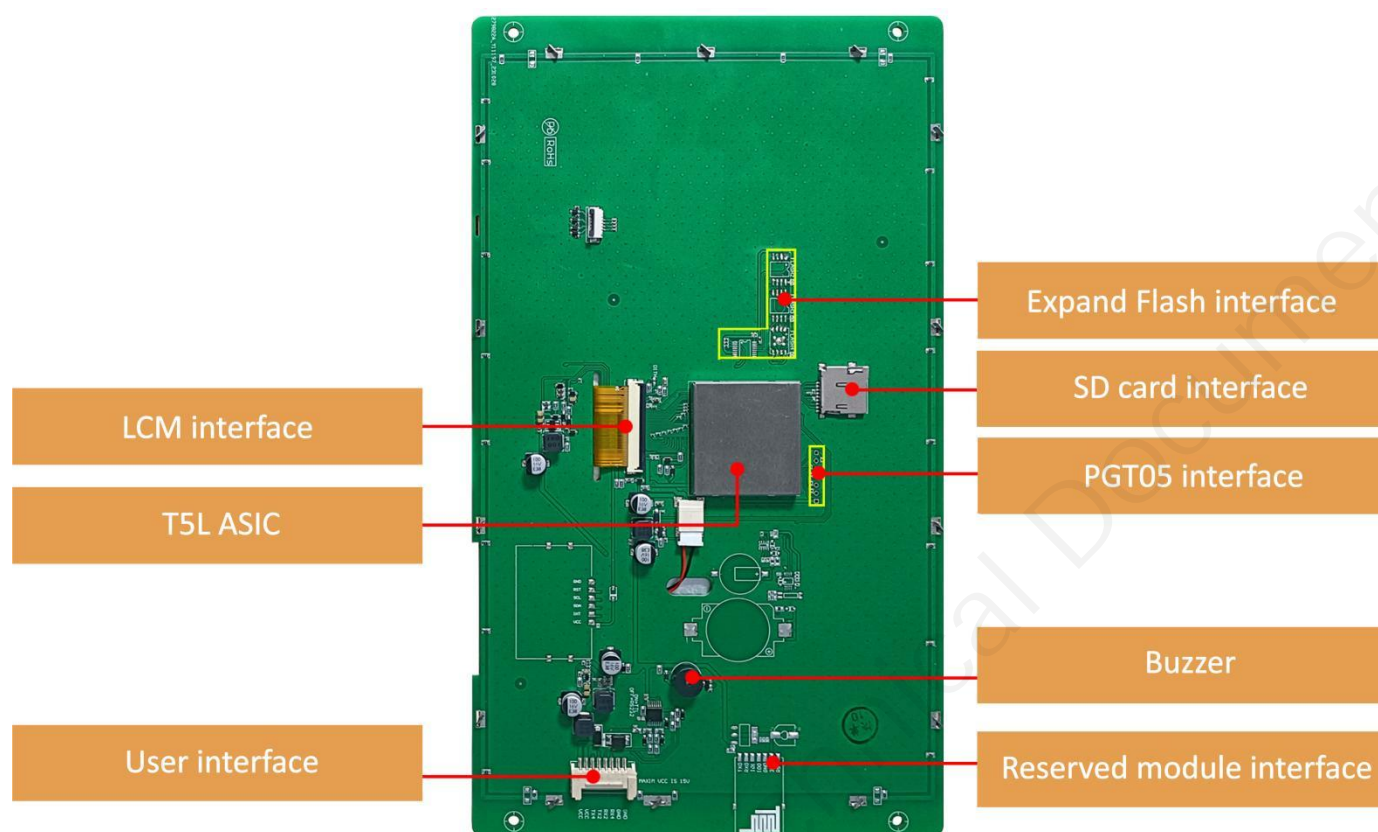
Features:

- Based on T5L2, running DGUS II system, commercial grade.
- 10.1-inch, 1024*600 pixels resolution, 16.7M colors, IPS-TFT-LCD, wide viewing angle.



1. Hardware and interface

1.1 Hardware interface



Hardware interface

1.2 Hardware and interface description

| No. | Name | Description |
|-----|---------------------------|--|
| 1 | T5L2 ASIC | Developed by DWIN. Mass production in 2019, 1MBytes Nor Flash on the chip, 512KBytes used to store the user database. Rewrite cycle: over 100,000 times |
| 2 | LCM interface | FPC50_0.5mm, RGB interface |
| 3 | User interface | 8Pin_2.0mm socket for power supply and serial communication. Download rate(typical value): 12KByte/s |
| 4 | Flash | 16MBytes NOR Flash, for fonts, pictures and audio files. Rewrite cycle: over 100,000 times |
| 5 | Expand Flash | Expandable to 64Mbytes NOR Flash or 48Mbytes NOR Flash+512Mbytes NAND Flash. When expanding Flash, components such as decoders and capacitors need to be soldered. Please consult the corresponding salesperson for relevant customization |
| 6 | Buzzer | 3V passive buzzer. Power: <1W |
| 7 | SD card interface | FAT32. Download files by SD interface can be displayed in statistics. Download rate: 4Mb/s |
| 8 | Reserved module interface | Wi-Fi module: connect to the cloud platform to update remotely USB module: download files by USB flash disk |
| 9 | PGT05 interface | When product crashes by accident, you can use PGT05 to update DGUS kernel and make the product return to normal |

2. Specification parameters

2.1 Display parameters

| | |
|---|---|
| LCD Type | IPS, TFT LCD |
| Viewing Angle | Wide viewing angle, 85°/85°/85°/85° (L/R/U/D) |
| Resolution | 1024×600 pixels (0°/90°/180°/270°) |
| Color | 24-bit 8R8G8B |
| Active Area (A.A.) | 222.7mm (W)×125.3mm (H) |
| View Area (V.A.) | 225.7mm (W)×127.6mm (H) |
| Backlight Mode | LED |
| Backlight Service Life | >20000 hours (Time of the brightness decaying to 50% on the condition of continuous working with the maximum brightness) |
| Brightness | 250nit |
| Brightness Control | 0~100 grade (When the brightness is adjusted to 1%~30% of the maximum brightness, flickering may occur and is not recommended to use in this range) |
| Note: You can use dynamic screen saver wallpapers to avoid afterimages caused by fixed page display for a long time. | |

2.2 Serial interface parameters

| | | | | | |
|------------------------|--|------|-----|-----|------|
| Mode | UART2: ON=TTL/CMOS; OFF=RS232 UART4: ON=TTL/CMOS; OFF=RS232 (Only available after OS configuration) | | | | |
| Voltage Level | Test Condition | Min | Typ | Max | Unit |
| | Output 1, Iout = -4mA | 4.78 | 5.0 | - | V |
| | Output 0, Iout = 4mA | - | - | 0.4 | V |
| | Input 1 | 2.5 | 5.0 | - | V |
| | Input 0 | - | - | 1.0 | V |
| Baud Rate | 3150~3225600bps, typical value of 115200bps | | | | |
| Data Format | UART2: N81 UART4: N81/E81/O81/N82 , 4 modes (OS configuration) | | | | |
| Interface Cable | 8Pin_2.0mm | | | | |

2.3 Electrical specifications

| | | |
|--|-----------------------------|------------------------|
| Rated Power | <5W | |
| Operating Voltage | 6~15V, typical value of 12V | |
| Operating Current | 310mA | VCC=12V, max backlight |
| | 100mA | VCC=12V, backlight off |
| Recommended power supply: 12V 1A DC | | |

2.4 Operating environment

| | |
|------------------------------|------------------------------------|
| Operating Temperature | -20℃~70℃ (12V @ 60% RH) |
| Storage Temperature | -30℃~80℃ |
| Conformal Coating | None |
| Operating Humidity | 10%~90%RH, typical value of 60% RH |

3. Reliability test

3.1 Electrostatic discharge test

Test temperature: 25°C. Test humidity: 50%RH.

Test process: the product was placed on the test bench to perform contact and air discharge in turn of the serial screen iron frame and display area. During the experimental process, it was observed whether the screen is dead, black, white, splash, or reboot. According to the experiment results, the performance is in line with the criteria GB/T 17626.2 B level and above.

☒ Test standard : ☐ EN 61000-4-2:2009 ☒ IEC 61000-4-2:2008 ☐ GB/T 17626.2-2018
☐ Other:

Table 1: Electrostatic Discharge Immunity (Air Discharge)

| Test Points Locations | Test Levels | | | | | | | |
|-----------------------|-------------|------|------|------|------|------|-------|-------|
| | -2kV | +2kV | -4kV | +4kV | -8kV | +8kV | -15kV | +15kV |
| Screen | | | | | A | A | | |
| / | / | / | / | / | / | / | / | / |
| / | / | / | / | / | / | / | / | / |

Table 2: Electrostatic Discharge Immunity (Direct Contact)

| Test Points Locations | Test Levels | | | | | | | |
|-----------------------|-------------|------|------|------|------|------|------|------|
| | -2kV | +2kV | -4kV | +4kV | -6kV | +6kV | -8kV | +8kV |
| Frame | | | | | A | A | | |
| / | / | / | / | / | / | / | / | / |
| / | / | / | / | / | / | / | / | / |

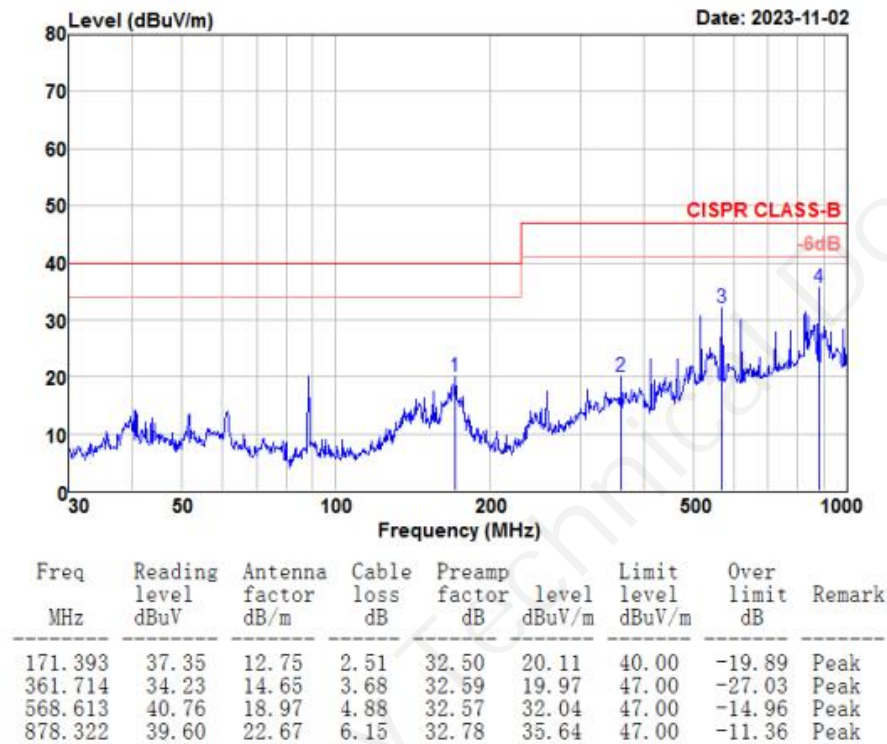
Performance Criterion:

- A. Normal performance within limits specified by the manufacturer, requestor or purchaser;
- B. Temporary loss of function or degradation of performance which ceases after the disturbance ceases, and from which the equipment under test recovers its normal performance, without operator intervention;
- C. Temporary loss of function or degradation of performance, the correction of which requires operator intervention;
- D. Loss of function or degradation of performance which is not recoverable, due to damage to hardware or software, or loss of data.

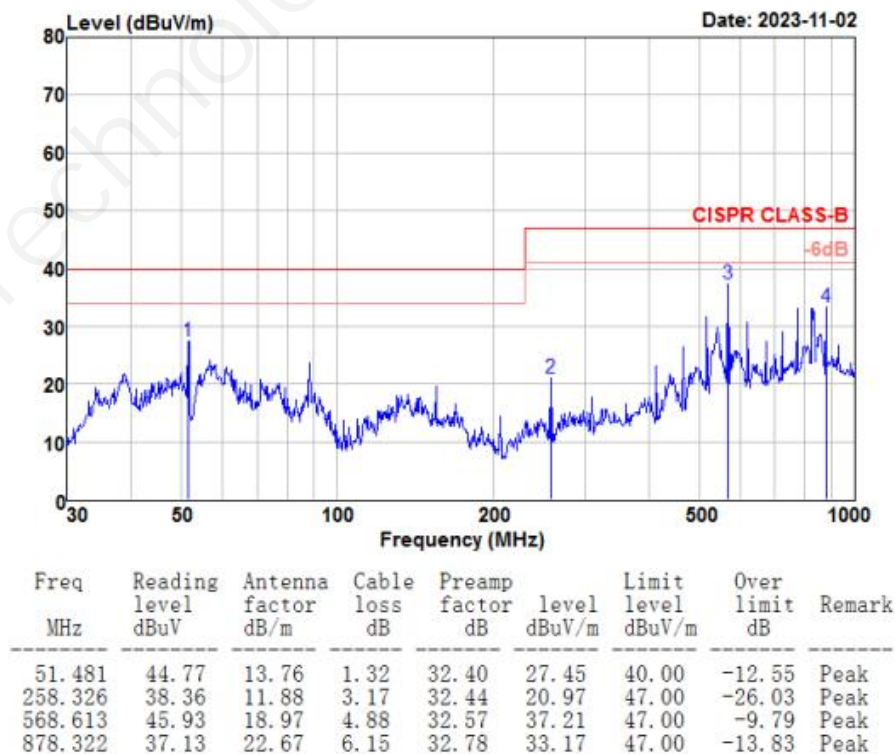
3.2 RE test

| Test Item | Test Standard | Result |
|-----------|---------------|------------------|
| RE | Class B | Normal operation |

HORIZONTAL

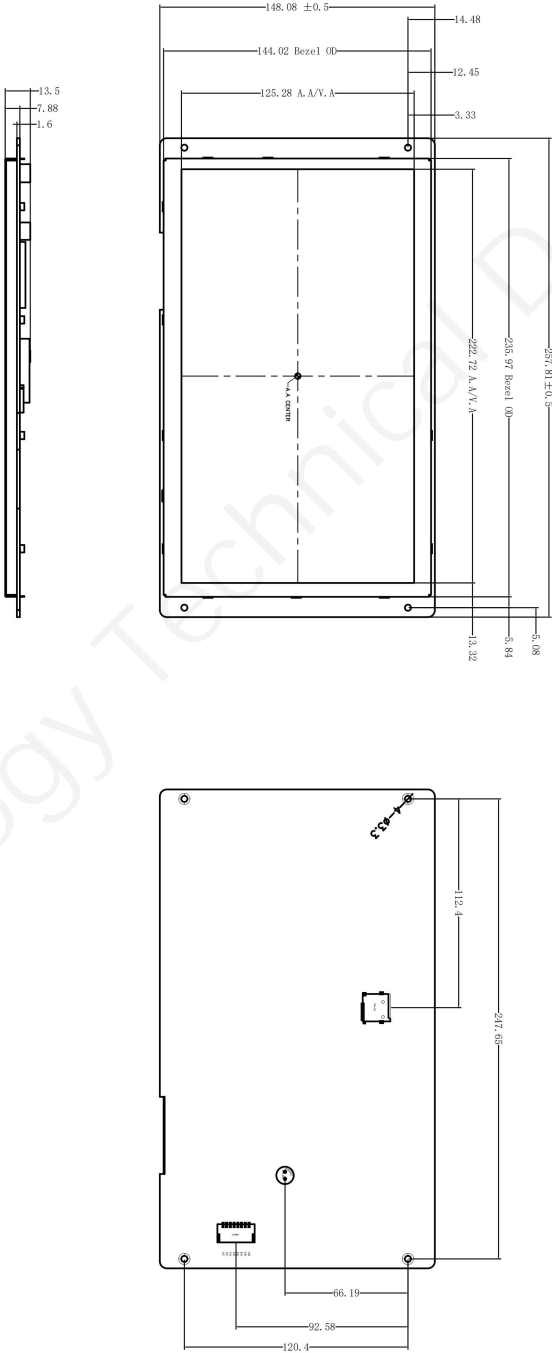


VERTICAL



4. Packaging & dimensions

| Form Factor | 257.8mm (W)×148.1mm (H)×13.6mm (T) | | | |
|-------------------------|--|-------|----------------|---------------|
| Installation Dimensions | Positioning hole:236.0(+0.3mm)×144.0(+0.3mm) | | | |
| Net Weight | 501g | | | |
| Packaging Standards | | | | |
| Model | Dimensions | Layer | Quantity/Layer | Quantity(Pcs) |
| Carton1: | 220mm(L)×160mm(W)×47mm (H) | - | - | - |
| Carton2: | 250mm(L)×200mm(W)×80mm (H) | - | - | - |
| Carton3: | 320mm(L)×270mm(W)×80mm (H) | 1 | 2 | 2 |
| Carton4: | 450mm(L)×350mm(W)×300mm(H) | 1 | 10 | 10 |
| Carton5: | 600mm(L)×450mm(W)×300mm(H) | 1 | 16 | 16 |



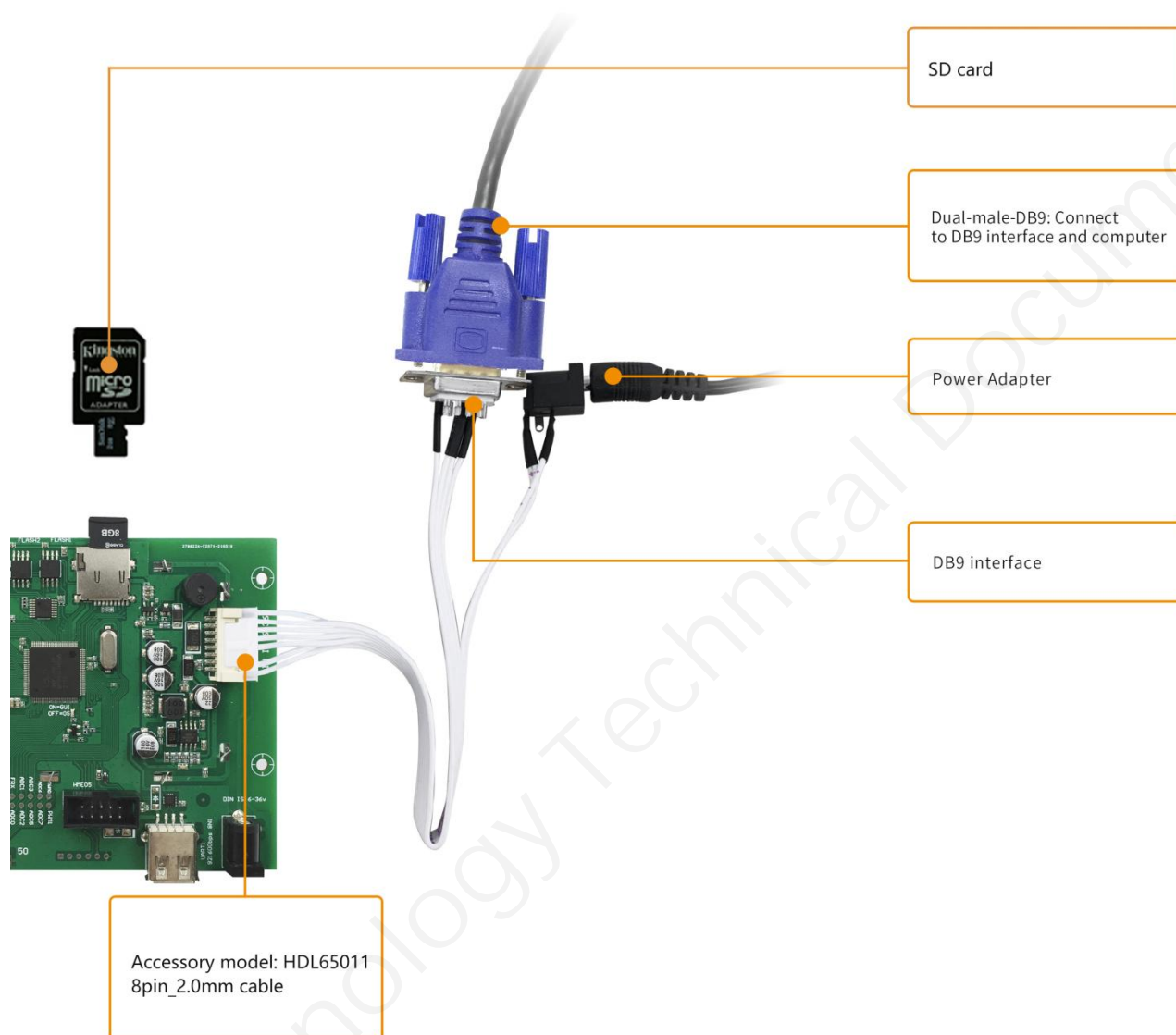
| Definition | Pin# | Type | Description |
|------------|------|------|--------------|
| VIN | 1, 2 | P | Power Input |
| TX4 | 3 | 0 | UART4 Output |
| TX2 | 4 | 0 | UART2 Output |
| RX2 | 5 | I | UART2 Input |
| RX4 | 6 | I | UART4 Input |
| GND | 7, 8 | P | GND |

1. Location hole is used as position reference.
2. Unmarked Tolerance is $\pm 0.3\text{mm}$
Note: Active area is marked in Dash lines

| Model | DMG10600C101_04WN | | | | DWIN Technology | | | | |
|---------|-------------------|----------|------|------|-----------------|--|--|--|-----------|
| Drawing | A 4 | Drawn | DWIN | Date | | | | | 2024.4.30 |
| Scale | 1 : 1 | Review | | Date | | | | | |
| Unit | MM | Approval | | Date | | | | | |
| | | | | | | | | | |

5. Debugging tools

It is recommended for new users of DWIN smart LCMs to purchase official accessories. For more details, please refer to customer service center.



6. T5L series IC features

- (1) Mature and stable 8051 core which is the most widely used with the maximum operating frequency of T5L is up to 250MHz, 1T(single instruction cycle)high speed operation.
- (2) Separate GUI CPU Core running DGUS II System:
 - High-speed display memory, 2.4GB/S bandwidth.
 - 2D hardware acceleration, the decompression speed of JPEG is up to 200fps@1280*800 and the UI with animation and icons as its main feature is extremely cool and smooth.
 - Images and icons stored in JPEG format. Adopt Low-cost 16Mbytes SPI Flash.
 - Support CTP or RTP with adjustable sensitivity and maximum 400 Hz touch frequency.
 - 1-way 15bit 32Ksps PWM digital power amplifier driver loudspeaker, save power amplifier cost and achieve high signal-to-noise ratio and sound quality restoration.
 - 128Kbytes variable storage space for exchanging data with OS CPU Core and memory.
 - Support DGUS development and simulation on PC. Support background remote upgrade.
- (3) Separate CPU (OS CPU) core runs user 8051 code or DWIN OS system and user CPU is omitted in practical application:
 - Standard 8051 architecture and instruction set, 64Kbytes code space, 32Kbytes on-chip RAM.
 - 64 bit integer mathematical operation unit (MDU), including 64 bit MAC and 64 bit divider.
 - 28 IOs, 4-channel UARTs, 1-channel CAN, up to 8-channel 12-bit A/Ds and 2-channel 16-bit PWM of adjustable resolution.
 - Support IAP on-line simulation and debugging with unlimited number of breakpoints.
 - Upgrade code online through DGUS system.
- (4) 1Mbytes on-chip Flash with DWIN patent encryption technology ensure code and data security.
- (5) Operating temperature ranges from -40°C to +85°C(IC operating temperature customizable from -55°C to 105°C).

DWIN encourages users to design your own customized product based on T5L

7. Revision records

| Rev | Revise Date | Content | Editor |
|-----|-------------|--|---------|
| 00 | 2023-07-06 | First Edition | Xu Ying |
| 01 | 2024-04-29 | EMC hardware upgrade, natural consumption of inventory | Xu Ying |
| 02 | 2024-05-06 | Revise CAD dimensions | Xu Ying |

Please contact us if you have any questions about the use of this document or our products, or if you would like to know the latest information about our products:

- Customer service Tel: +86 400 018 9008
- Customer service email: dwinhmi@dwin.com.cn
- DWIN Developer Forum: <https://forums.dwin-global.com/>

Thank you all for continuous support of DWIN, and your approval is the driving force of our progress!

Important Disclaimer

DWIN reserves the right to make any changes to product designs without prior notice.

Customers should ensure strictly adhering to all the relevant standards and requirements during the product application process, including but not limited to functional safety, information security, and regulatory provisions.

DWIN shall not bear any joint and several liability for any consequences that may arise from customers' adoption of DWIN products. In particular, for risks that may lead to significant property losses, environmental hazards, personal injury, or even death, especially in high-risk application areas such as military applications, flammable and explosive places, and life-saving medical equipment, customers should independently assess the risks and take corresponding preventive and protective measures. DWIN shall not bear any relevant responsibility.