

# DMT10768T080\_35WTC



## System Hardware

Properties	Parameters
Motherboard Level	Industrial-grade
CPU	A40i, Quad-core ARM CortexTM-A7 1.2GHz Processor
OS	Linux 3.10
Storage	8Gbytes eMMC
RAM	1Gbytes DDR3

## Display Parameters

Properties	Parameters	Description
Size	8 inch	-
LCD Type	IPS, TFT LCD	-
Viewing Angle	85°/85°/85°/85°	Wide viewing angle, high contrast, and good color reproduction
Active Area (AA)	162.0mm(W)x121.5mm(H)	-
Resolution	1024x768	Available for 0°/90°/180°/270°rotated display
Backlight Service Life	>20000 Hrs	Backlight service life refers to the period the LED backlight operates under test conditions until brightness decreases to 50% of the initial level.
Brightness	250nit	100-level brightness adjustment (Flickering may occur at 1%-30% of max brightness; not recommended for use in this range)

Note: Use dynamic screen saver to prevent afterimages from prolonged fixed page display.

## Touch Parameter

Properties	Parameters
Touch Type	Capacitive touch panel
Structure	G+G structure with tempered glass surface

## Power Supply

Properties	Min	Typ	Max	Unit
Power Voltage	9.0	12.0	36.0	V

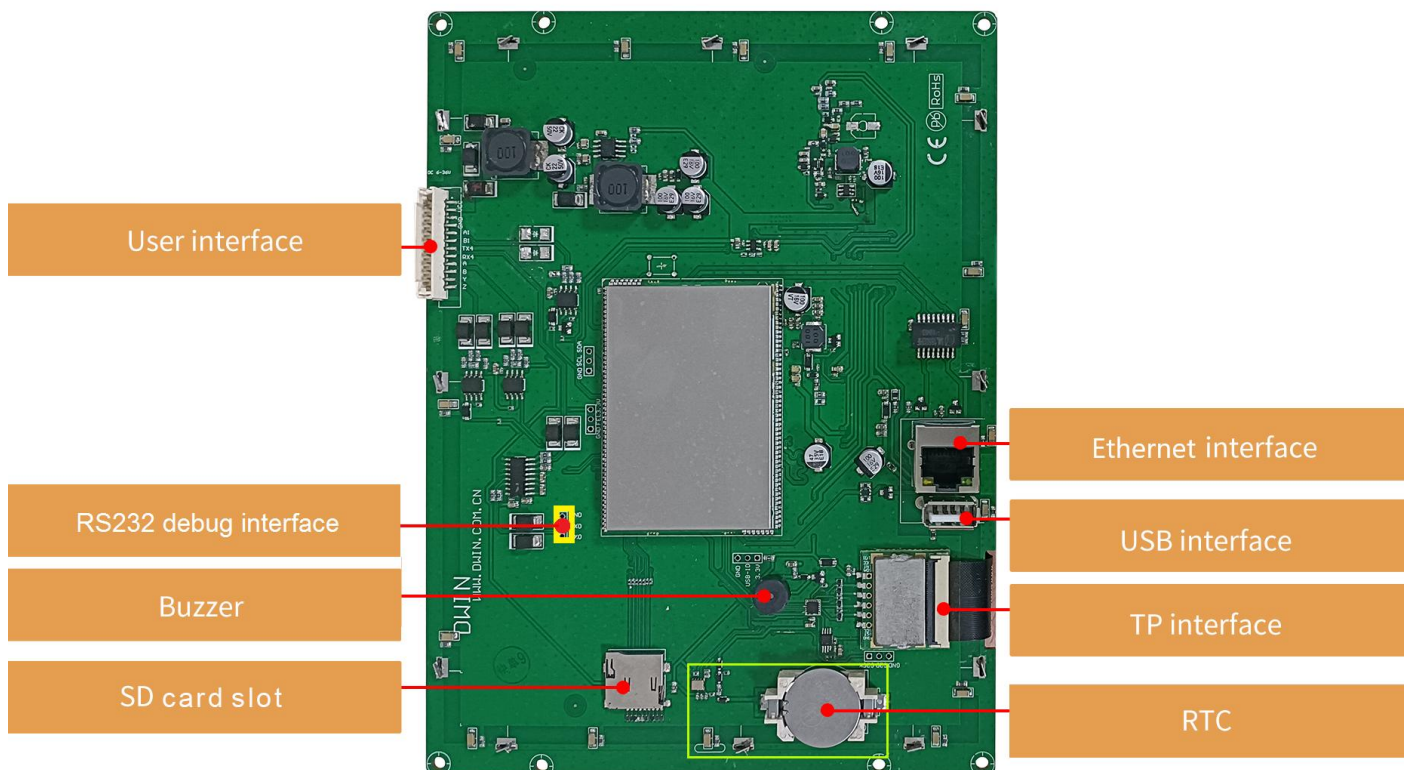
Recommended power supply:12V 1A DC.

## Environment & Reliability Test

Properties	Conditions	Min	Typ.	Max	Unit
Working Temperature	60%RH at 12V voltage	-20	25	70	℃
Storage Temperature	-	-30	25	80	℃
Working Humidity	25℃	10%	60%	90%	RH
Conformal Coating	Yes				
ESD	Air discharge ±8KV; Contact discharge ±6KV				
EFT	Group pulse interference ±2KV				

## Peripheral and Interfaces

Properties	Description
User Interface	12Pin_2.0mm Socket
COM	RS232*1 (COM4), RS485*1 (COM2), RS422*1 (COM3)
USB	USB*1 (HOST)
SD card	Max. 64G
Ethernet	10/100Mbps
RTC	Accuracy: $\pm 20\text{ppm}$ @25°C
Buzzer	3V passive buzzer

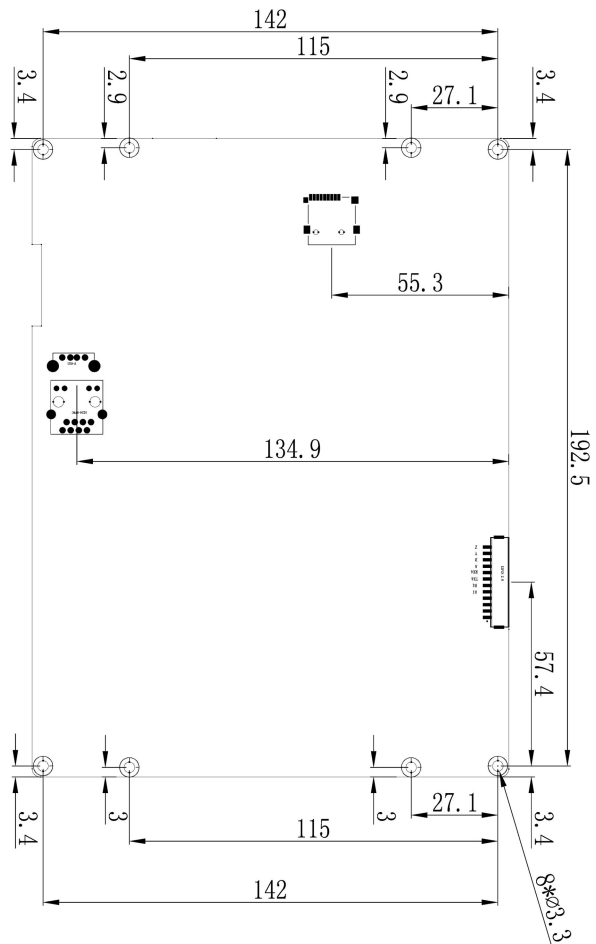
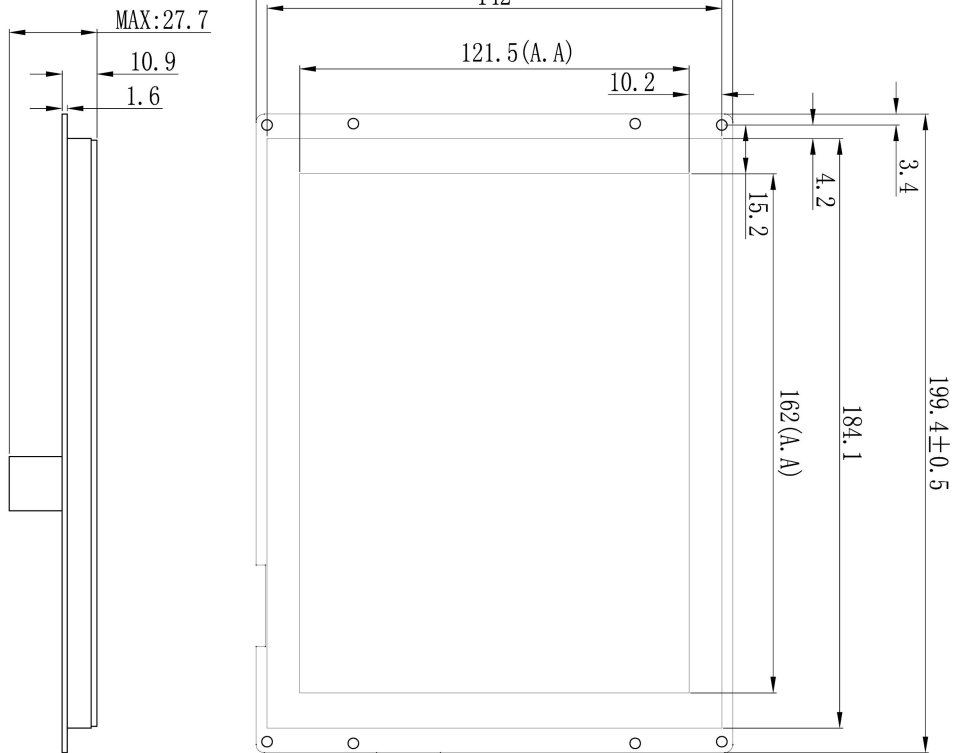


## ● Development Platform

Development	
QT	QtCreator2.7.2 and above

## ● Packing Capacity & Dimension

Dimension				
Dimension	199.40(W)x148.80(H)x27.70(T)mm			
Net Weight	440g			
Packing Capacity				
Model	Size	Layer	Quantity/Layer	Quantity(Pcs)
Carton1:	220mm(L)×160mm(W)×47mm	-	-	-
Carton2:	250mm(L)×200mm(W)×80mm	2	1	2
Carton3:	320mm(L)×270mm(W)×80mm	-	-	-
Carton4:	450mm(L)×350mm(W)×300mm	-	-	-
Carton5:	600mm(L)×450mm(W)×300mm	1	20	20



Definition	Pin#	Type	Description
VCC	1, 2	P	Power Input
GND	3, 4	P	GND
A1	5	A	RS485+
B1	6	B	RS485-
TX4	7	0	UART+ DOUT
RX4	8	I	UART+ DIN
A	9	-	RS422
B	10	-	RS422
Y	11	-	RS422
Z	12	-	RS422

Location hole is used as position reference.

Unmarked Tolerance is  $\pm 0.3$ mm

Active area is marked in Dash lines

Model	DMT10768T080-35WTC				DWIN Technologies			
Drawing	A 4	Drawn		Date				
Scale	1:1	Review		Date				
Unit	MM	Approval		Date				

- **Revision records**

Rev	Revise Date	Content	Editor
00	2022-12-07	First Edition	YML
01	2025-06-03	Modify voltage range	Chen

Please contact us if you have any questions about the use of this document or our products, or if you would like to know the latest information about our products:

Customer service Tel: +86-400-018-9008

Customer service E-mail: [dwinhmi@dwin.com.cn](mailto:dwinhmi@dwin.com.cn)

Website: [www.dwin-global.com](http://www.dwin-global.com)

DWIN Developer Forum: <https://forums.dwin-global.com/index.php/forums>

Thank you all for continuous support of DWIN, and your approval is the driving force of our progress!

### Important Disclaimer

DWIN reserves the right to make any changes to product designs without prior notice.

Customers should ensure strictly adhering to all the relevant standards and requirements during the product application process, including but not limited to functional safety, information security, and regulatory provisions.

DWIN shall not bear any joint and several liability for any consequences that may arise from customers' adoption of DWIN products. In particular, for risks that may lead to significant property losses, environmental hazards, personal injury, or even death, especially in high-risk application areas such as military applications, flammable and explosive places, and life-saving medical equipment, customers should independently assess the risks and take corresponding preventive and protective measures. DWIN shall not bear any relevant responsibility.

DWIN Technology Technical Document