

DMT10600T101_35WTC



● System Hardware

Properties	Parameters
Motherboard Level	Industrial
CPU	A40i, Quad-core ARM CortexTM-A7 1.2GHz Processor
OS	Linux 3.10
Storage	8Gbytes eMMC
RAM	1Gbytes DDR3

● Display Parameters

Properties	Parameters	Description
Size	10.1 inch	-
LCD Type	IPS, TFT LCD	-
Viewing Angle	85°/85°/85°/85°	Wide viewing angle, high contrast, and good color reproduction
Active Area (AA)	222.70mm(W)x125.30mm(H)	-
Viewing Area (VA)	222.70mm(W)x125.30mm(H)	-
Resolution	1024x600	Available for 0°/90°/180°/270°rotated display
Backlight Service Life	>20000 Hrs	Backlight service life refers to the period the LED backlight operates under test conditions until brightness decreases to 50% of the initial level.
Brightness	250nit	100-level brightness adjustment (Flickering may occur at 1%-30% of max brightness; not recommended for use in this range)
Note: Use dynamic screen saver to prevent afterimages from prolonged fixed page display.		

● Touch Parameter

Properties	Parameters
Touch Type	Capacitive touch panel
Structure	G+G structure with tempered glass surface

● Power Supply

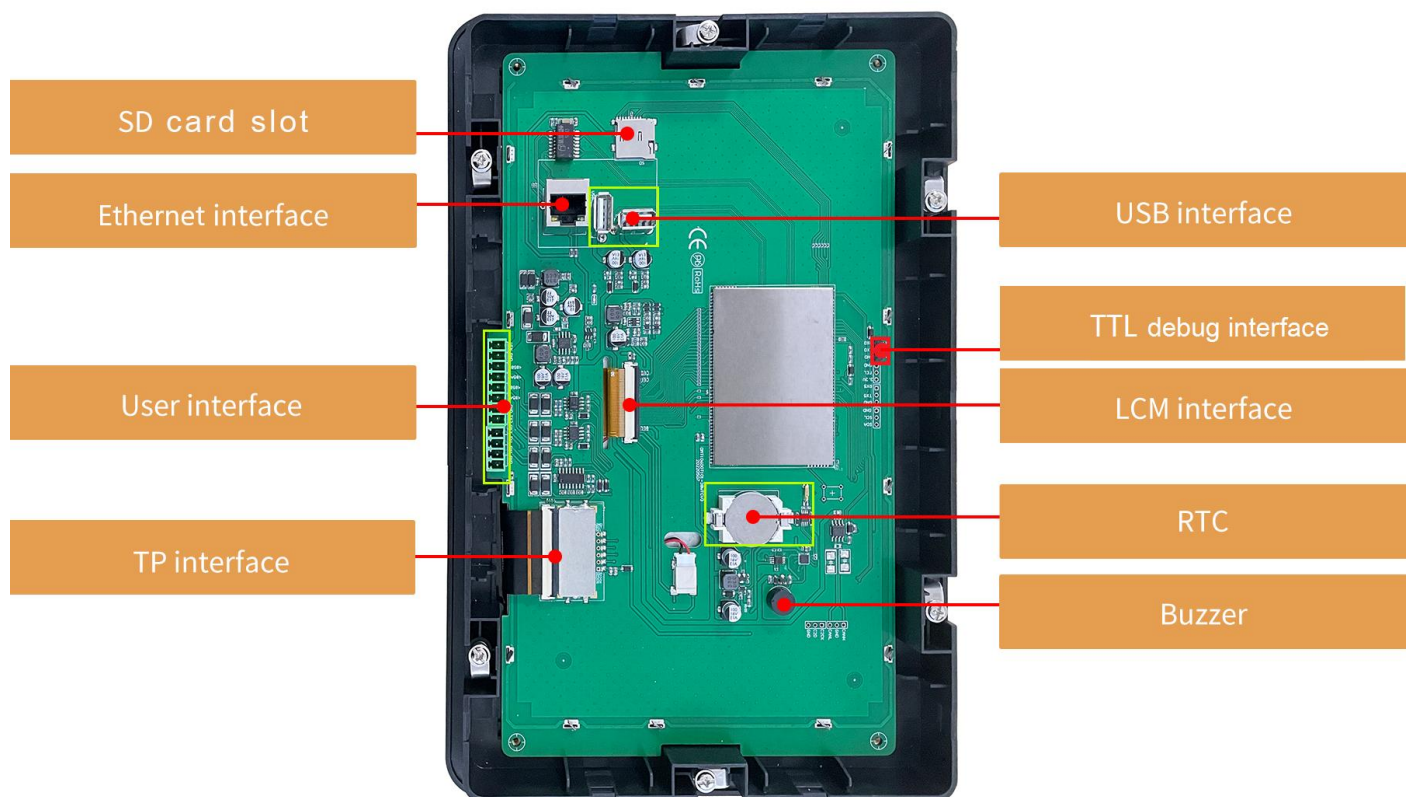
Properties	Min	Typ	Max	Unit
Power Voltage	9.0	12.0	36.0	V

● Environment & Reliability Test

Properties	Conditions	Min	Typ	Max	Unit
Working Temperature	60%RH at 12V voltage	-20	25	70	℃
Storage Temperature	-	-30	25	80	℃
Working Humidity	25℃	10%	60%	90%	RH
Conformal coating	Yes				
ESD	Air discharge±8KV				
EFT	Group pulse interference ±2KV				

Peripheral and Interfaces

Properties	Description
User Interface	8Pin_3.81mm Socket, 4Pin_3.81mm Socket
COM	RS232*2 (COM2 & COM6), RS485*2 (COM3 & COM4)
USB	USB*2 (HOST)
SD card	Max. 64G
Ethernet	10/100Mbps
RTC	Accuracy: $\pm 20\text{ppm}$ @25°C
Buzzer	3V passive buzzer

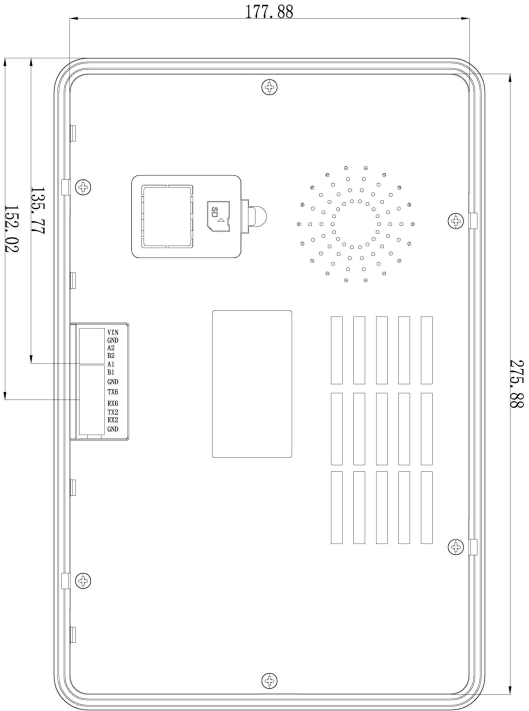
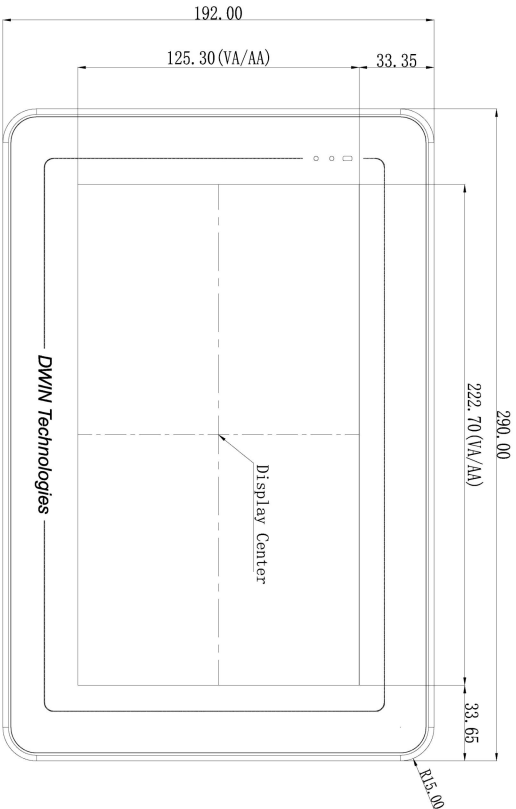


● Development Platform

Development	
QT	QtCreator2.7.2 and above

● Packing Capacity & Dimension

Dimension				
Dimension	290.00(W)x192.00(H)x29.50(T)mm			
Net Weight	950g			
Packing Capacity				
Model	Size	Layer	Quantity/Layer	Quantity(Pcs)
Carton1:	220mm(L)×160mm(W)×47mm	-	-	-
Carton2:	250mm(L)×200mm(W)×80mm	-	-	-
Carton3:	320mm(L)×270mm(W)×80mm	-	-	-
Carton4:	450mm(L)×350mm(W)×300mm	-	-	-
Carton5:	600mm(L)×450mm(W)×300mm	1	10	10



Definition	Pin#	I/O	Description
VIN	1	P	Power Input
GND	2, 7, 12	P	GND
A2	3	A+	485+
B2	4	B-	485-
A1	5	A+	485+
B1	6	B-	485-
TX6	8	0	UART 6 DOUT
RX6	9	1	UART 6 DIN
TX2	10	0	UART 2 DOUT
RX2	11	1	UART 2 DIN

Location hole is used as position reference.
Unmarked Tolerance is +/-0.3mm
Active area is marked in Dash lines

Model	DMT10600T101-35WTC				DWIN Technologies			
Drawing	A 4	Drawn	DWIN	Date				
Scale	1:1	Review		Date				
Unit	MM	Approval		Date				

- **Revision records**

Rev	Revise Date	Content	Editor
00	2022-10-24	First Edition	Lvzhi Chen
01	2022-12-12	Package, Interface Picture and Format Update	YML
02	2025-0609	Modify voltage range	Chen

Please contact us if you have any questions about the use of this document or our products, or if you would like to know the latest information about our products:

Customer service Tel: +86-400-018-9008

Customer service E-mail: dwinhmi@dwin.com.cn

Website: www.dwin-global.com

DWIN Developer Forum: <https://forums.dwin-global.com/index.php/forums>

Thank you all for continuous support of DWIN, and your approval is the driving force of our progress!

Important Disclaimer

DWIN reserves the right to make any changes to product designs without prior notice.

Customers should ensure strictly adhering to all the relevant standards and requirements during the product application process, including but not limited to functional safety, information security, and regulatory provisions.

DWIN shall not bear any joint and several liability for any consequences that may arise from customers' adoption of DWIN products. In particular, for risks that may lead to significant property losses, environmental hazards, personal injury, or even death, especially in high-risk application areas such as military applications, flammable and explosive places, and life-saving medical equipment, customers should independently assess the risks and take corresponding preventive and protective measures. DWIN shall not bear any relevant responsibility.