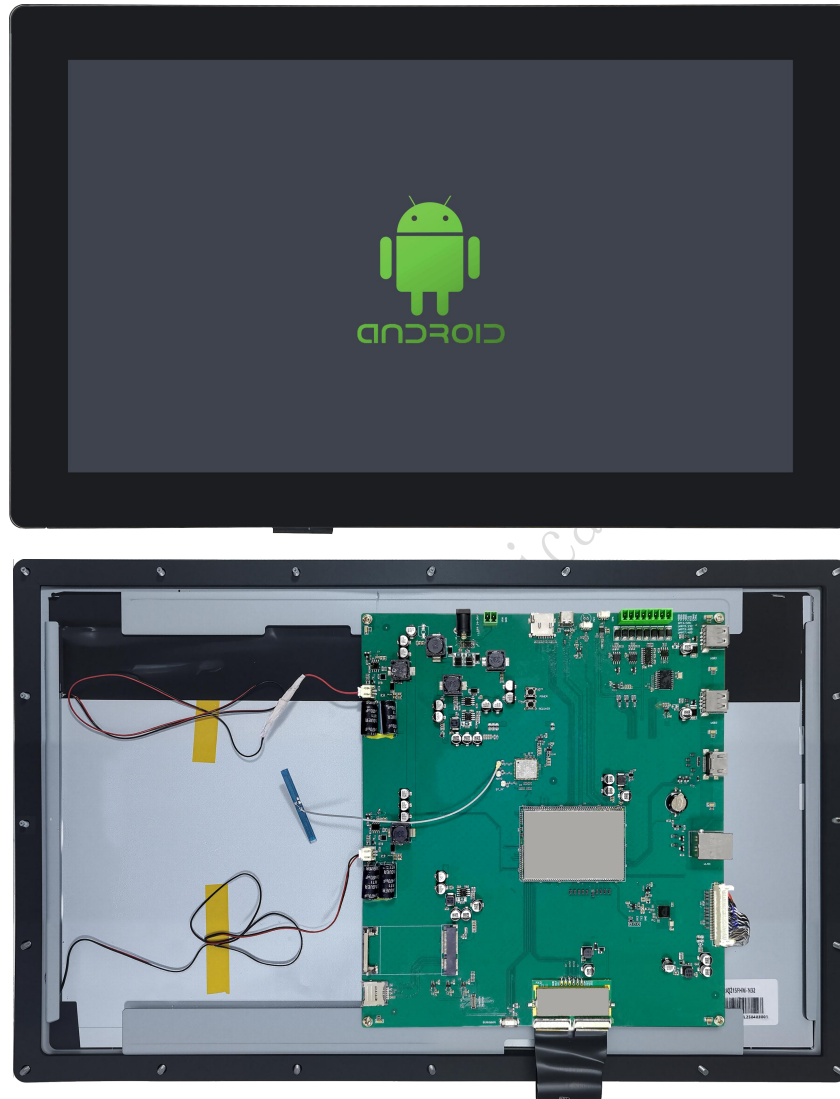


DMG19108T215_32WTC



● System Hardware

Properties	Parameters
Motherboard Level	Industrial-grade
CPU	RK3566, Quad-core ARM Cortex-A55 1.8GHz Processor
OS	Android 11
RAM	2Gbytes LPDDR4
Storage	8Gbytes eMMC

● Display Parameters

Properties	Parameters	Description
Size	21.5 inch	-
Viewing Area (VA)	477.24mm (W)×268.71mm (H)	-
Resolution	1920×1080	-
Backlight Service Life	>50000 Hrs	Backlight service life refers to the period the LED backlight operates under test conditions until brightness decreases to 50% of the initial level
Brightness	900nit	100-level brightness adjustment (Flickering may occur at 1%-30% of max brightness; not recommended for use in this range)
Note: Use dynamic screen saver to prevent afterimages from prolonged fixed page display.		

● Touch Parameter

Properties	Parameters
Touch Type	G+G structure with 4mm tempered glass surface, Anti-glare, front IP65 waterproof
IK Code	IK08

● Power Supply

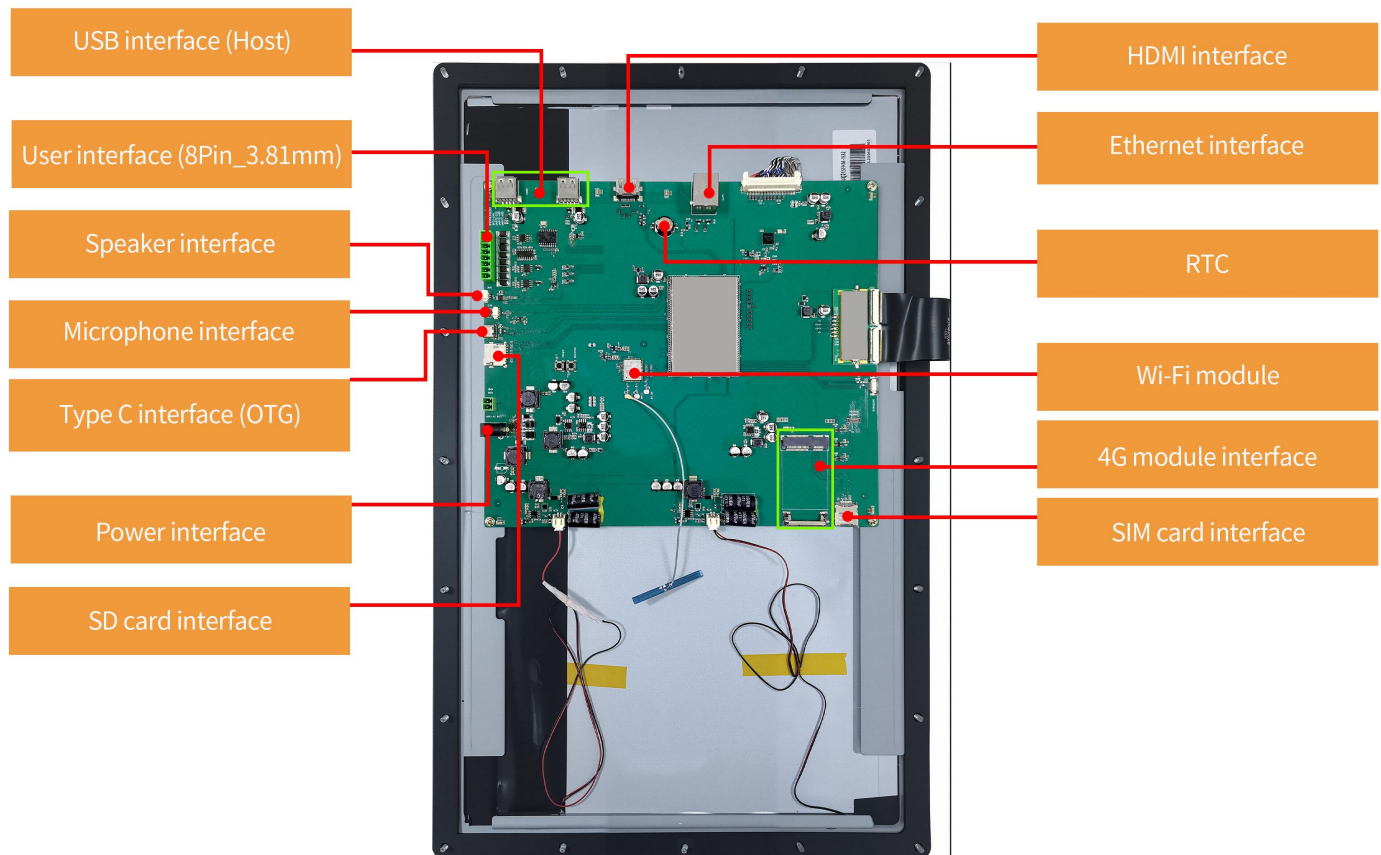
Properties	Min	Typ	Max	Unit
Power Voltage	24.0	24.0	36.0	V
Recommended power supply: 12V 2A DC.				

● Environment & Reliability Test

Properties	Conditions	Min	Typ	Max	Unit
Working Temperature	60%RH at 24V voltage	-20	25	70	℃
Storage Temperature	-	-30	25	80	℃
Working Humidity	25℃	10%	60%	90%	RH
Conformal Coating	Y				
ESD	Air: ±8KV, Contact: ±6KV				
EFT	Group pulse interference ±2KV				
RE	Class B				

● Peripheral and Interfaces

Properties	Description
User Interface	8Pin_3.81mm socket, power interface (3PIN_Φ2.0DH)
COM	RS232*1 (COM5), RS485*2 (COM7 & COM8), SPI3/CAN
Ethernet	10/100Mbps
USB	USB 2.0*2 (HOST), Type C*1 (OTG)
SD Card	Max 64G
Speaker	2Pin_1.25mm interface*1
Microphone	2Pin_1.25mm interface*1
Wi-Fi	IEEE 802.11a/b/g/n/ac/ax, 2.4GHz + 5GHz, Wi-Fi 6 and backward compatibility
Bluetooth Version	BT5.2
RTC	Accuracy: $\pm 20\text{ppm @}25^{\circ}\text{C}$
HDMI	23PIN_HDMI_SH
4G module Interface	Factory not configured, customizable to add



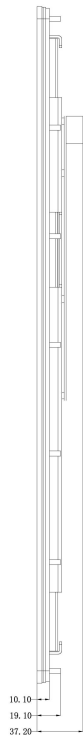
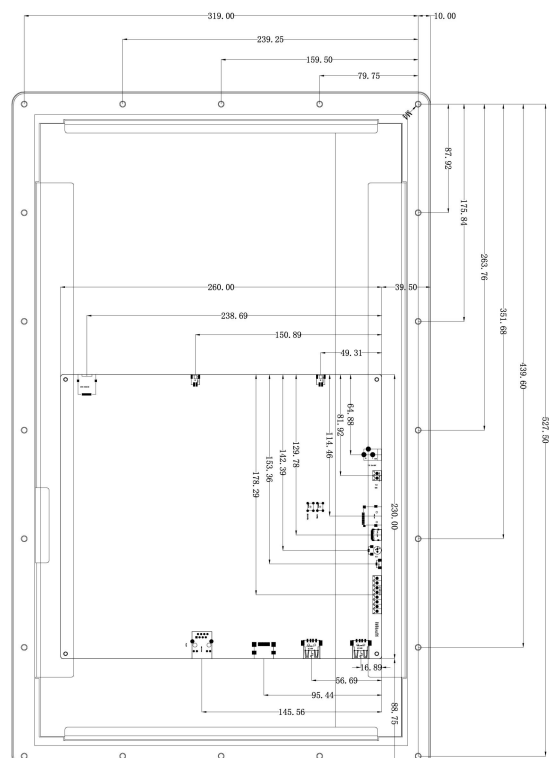
- **Development Platform**

Development	
Android	Java, Kotlin, C++

- **Packing Capacity & Dimension**

Dimension				
Dimension	547.5(W)×339.0(H)×37.2(T)mm			
Net Weight	5620g			
Packing Capacity				
Model	Size	Layer	Quantity/Layer	Quantity (Pcs)
Standard Carton 1:	640mm(L)×425mm(W)×30mm(H)	1	1	1
Standard Carton 2:	655mm(L)×440mm(W)×350mm(H)	4	1	4

DWIN Technology Technical Document



Definition	Pin#	I/O	Description
485B	1	B-	485-
485A	2	A+	485+
485B	3	B-	485-
485A	4	A+	485+
TX5	5	0	UART 5 DOUT
RX5	6	I	UART 5 DIN
CANH	7	H	CANH
CANL	8	L	CANL

Location hole is used as position reference.

Unmarked Tolerance is $\pm 0.3\text{mm}$

Active area is marked in Dash lines

Model 1	DMG191087215_32WTC					DWIN Technologies				
Drawing	A 4	Drawn	G. Y	Date	2025.07.25					
Scale	1 : 1	Review		Date						
Unit	MM	Approval		Date						

● Revision Records

Rev.	Revise Date	Content	Editor
00	2025-07-28	Initial release	Chen Xian

Please contact us if you have any questions about the use of this document or our products, or if you would like to know the latest information about our products:

Customer service Tel: +86-400-018-9008

Customer service E-mail: dwinhmi@dwin.com.cn

Website: www.dwin-global.com

DWIN Developer Forum: <https://forums.dwin-global.com/index.php/forums>

Thank you all for continuous support of DWIN, and your approval is the driving force of our progress!

Important Disclaimer

DWIN reserves the right to make any changes to product designs without prior notice.

Customers should ensure strictly adhering to all the relevant standards and requirements during the product application process, including but not limited to functional safety, information security, and regulatory provisions.

DWIN shall not bear any joint and several liability for any consequences that may arise from customers' adoption of DWIN products. In particular, for risks that may lead to significant property losses, environmental hazards, personal injury, or even death, especially in high-risk application areas such as military applications, flammable and explosive places, and life-saving medical equipment, customers should independently assess the risks and take corresponding preventive and protective measures. DWIN shall not bear any relevant responsibility.

DWIN Technology Technical Document