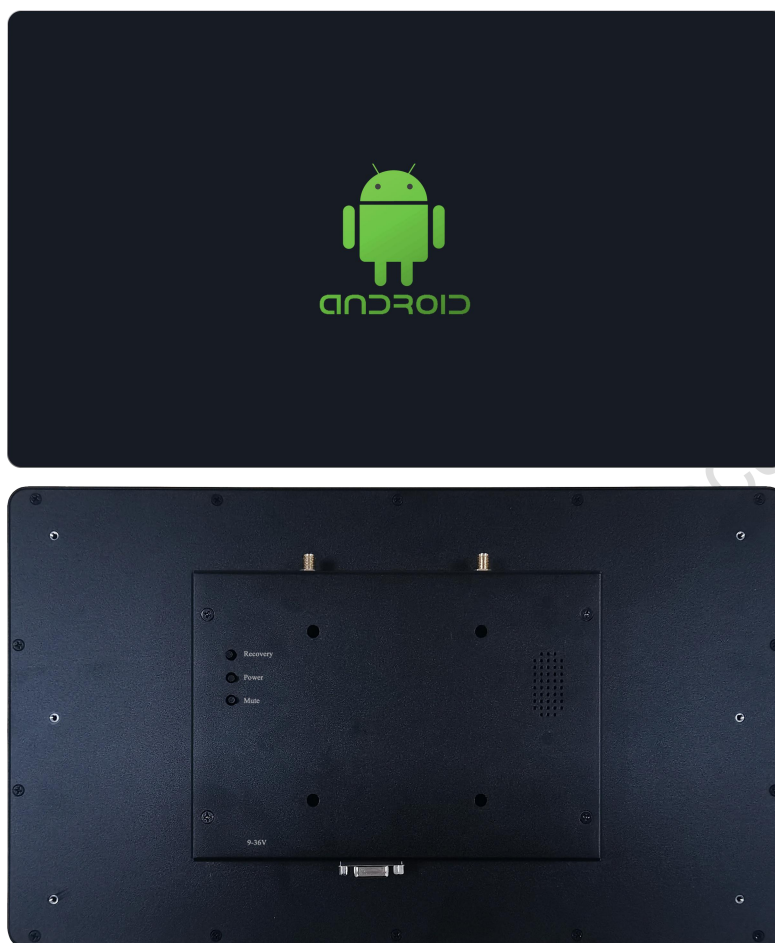


DMG19108C156_31WTC



System Hardware

Properties	Parameters
Motherboard Level	Commercial-grade
CPU	RK3566, Quad-core ARM Cortex-A55, 1.8GHz Processor
OS	Android 11
Storage	8Gbytes eMMC
RAM	2Gbytes LPDDR4

Display Parameters

Properties	Parameters	Description
Size	15.6 inch	-
Viewing Area(VA)	343.76mm(W)×193.19mm (H)	-
Resolution	1920×1080	-
Backlight Service Life	>20000 Hrs	Backlight service life refers to the period the LED backlight operates under test conditions until brightness decreases to 50% of the initial level
Brightness	100nit	100-level brightness adjustment (Flickering may occur at 1%-30% of max brightness; not recommended for use in this range)
Note: Use dynamic screen saver to prevent afterimages from prolonged fixed page display.		

Touch Parameter

Properties	Parameters
Touch Type	Integrated black capacitive touch panel, the bonding of the LCD panel to the touch panel with OCA process, 10mm uniform black touch bezel (all sides)

Power Supply

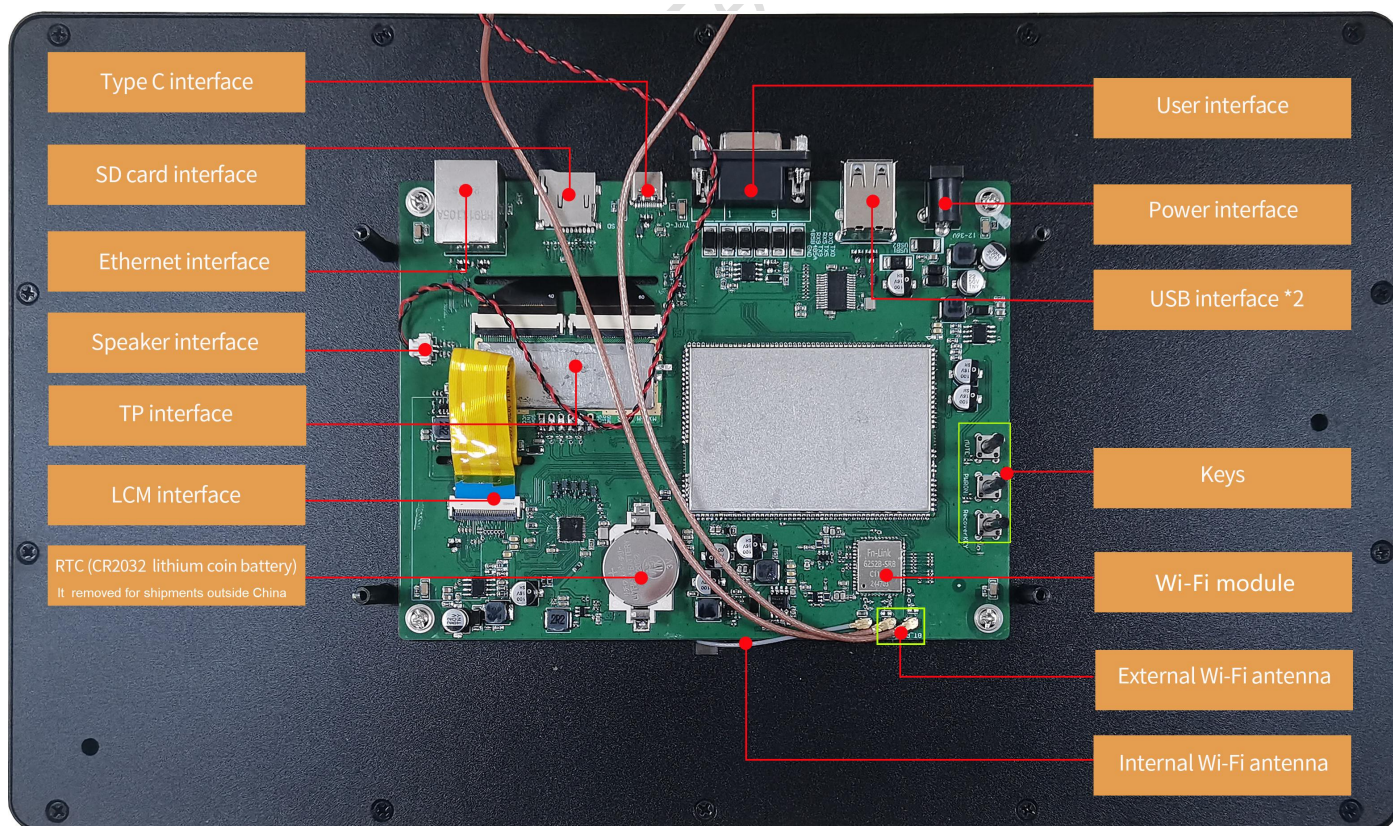
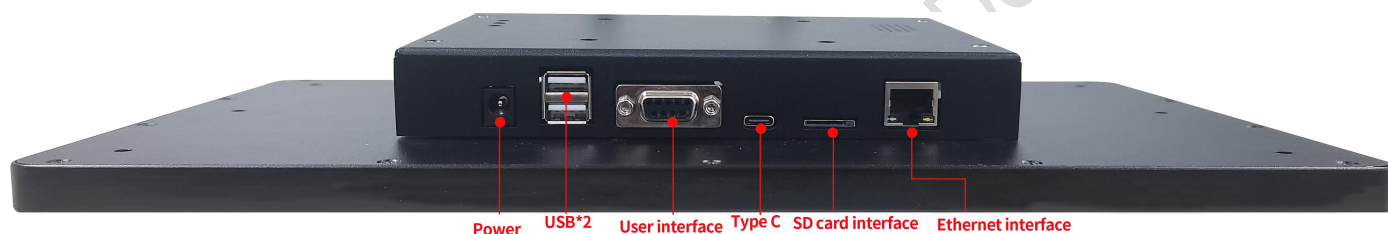
Properties	Min	Typ	Max	Unit
Power Voltage	12.0	12.0	36.0	V
Recommended power supply: 12V 1A DC				

Environment & Reliability Test

Properties	Conditions	Min	Typ	Max	Unit
Working Temperature	60%RH at 12V voltage	0	25	50	℃
Storage Temperature	-	-10	25	60	℃
Working Humidity	25℃	10%	60%	90%	RH
Conformal Coating	Y				
Enclosure	Anodized aluminum enclosure				
ESD	Air: ±8KV				
RE	Class A				

Peripheral and Interfaces

Properties	Description
User Interface	DB9 female Right-Angle receptacle, power interface (3PIN_Φ2.0DH)
COM	RS232*2(COM5 & COM9), RS485*1(COM8), TTL*1(COM0)
Ethernet	10/100Mbps
USB	USB*2(HOST), Type C(OTG)
SD Card	Max 64G
Wi-Fi	IEEE 802.11a/b/g/n/ac/ax, 2.4GHz + 5GHz, Wi-Fi 6 and backward compatibility
Bluetooth Version	BT5.2
RTC	Accuracy: $\pm 20\text{ppm}$ @25℃
Speaker	2Pin_1.25mm interface*1
Keys	Recovery, Power, Mute



● Development Platform

Development	
Android	Java, Kotlin, C++

● Packing Capacity & Dimension

Dimension				
Dimension	367.06(W)×216.49(H)×39.00(T)mm			
Net Weight	-			
Packing Capacity				
Model	Size	Layer	Quantity/Layer	Quantity(Pcs)
Carton1:	220mm(L)×160mm(W)×47mm (H)	-	-	-
Carton2:	250mm(L)×200mm(W)×80mm (H)	-	-	-
Carton3:	320mm(L)×270mm(W)×80mm (H)	-	-	-
Carton4:	450mm(L)×350mm(W)×300mm(H)	-	-	-
Carton5:	600mm(L)×450mm(W)×300mm(H)	1	5	5

Standard Accessories

Accessories Name	Description
External Wi-Fi Antenna	Black, antenna (Qty:2)



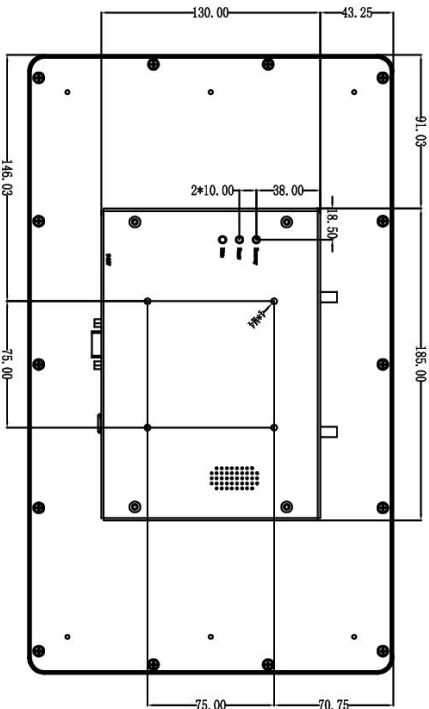
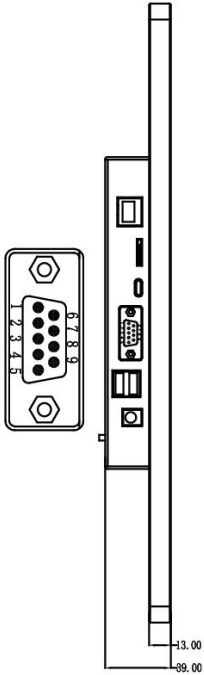
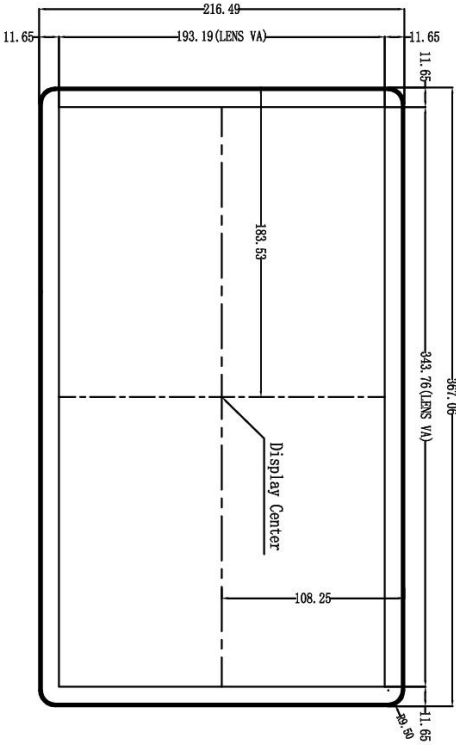
Antenna configuration diagram

Optional Accessories

Accessories Name	Description
C156-31WTCZJ	Clips No.1 (Qty:4)
	Clips No.2, 19.9×11×4mm, 1.0mm galvanized steel sheet (Qty:4)
	M3×20mm white screws with integrated washer (Qty:4)
	M3×5mm, black 304 stainless steel pan head screws (Qty:6)
	Dimensions: 130.00×25.50×9.50mm, 1.5mm thickness, 15.6 inch black anodized aluminum left/right bracket set (Qty:1)



Bracket & clip mounting assembly diagram



The opening size for embedded installation: 340*183mm
It also needs to be used in conjunction with the embedded kitC156-31WTCZJ

Location hole is used as position reference
Unmarked Tolerance is +/-0.3mm
Active area is marked in Dash Lines

Definition	Pin#	I/O	Description
GND	1	P	GND
485A	2	A+	RS485+
TX9	3	0	UART 9 DOUT
TX5	4	0	UART 5 DOUT
TX0	5	0	UART 0 DOUT
485B	6	B-	RS485-
RX9	7	I	UART 9 DIN
RX5	8	I	UART 5 DIN
RX0	9	I	UART 0 DIN

Model	DMG19108C156-31WTC				DWIN Technology				
Drawing	A 4	Drawn	G. Y	Date					2025.03.18
Scale	1:1	Review		Date					
Unit	MM	Approval		Date					

● Revision Records

Rev.	Revise Date	Content	Editor
00	2025-03-21	First edition	Chen Xian
01	2025-05-14	Modify the description Wi-Fi&Bluetooth	Chen Xian

Please contact us if you have any questions about the use of this document or our products, or if you would like to know the latest information about our products:

Customer service Tel: +86-400-018-9008

Customer service E-mail: dwinhmi@dwin.com.cn

Website: www.dwin-global.com

DWIN Developer Forum: <https://forums.dwin-global.com/index.php/forums>

Thank you all for continuous support of DWIN, and your approval is the driving force of our progress!

Important Disclaimer

DWIN reserves the right to make any changes to product designs without prior notice.

Customers should ensure strictly adhering to all the relevant standards and requirements during the product application process, including but not limited to functional safety, information security, and regulatory provisions.

DWIN shall not bear any joint and several liability for any consequences that may arise from customers' adoption of DWIN products. In particular, for risks that may lead to significant property losses, environmental hazards, personal injury, or even death, especially in high-risk application areas such as military applications, flammable and explosive places, and life-saving medical equipment, customers should independently assess the risks and take corresponding preventive and protective measures. DWIN shall not bear any relevant responsibility.